



Next steps

Patricia Martínez (Deputy Team Leader)

Rural Pact Support Office

Territorial instruments (LEADER/CLLD, Integrated Territorial Investments, and Smart Villages): lessons for the future

22 April 2026



Next steps

EVENT | WEBINAR

Territorial instruments (LEADER/CLLD, Integrated Territorial Investments, and Smart Villages): lessons for the future

Rural Pact > Rural Revitalisation Platform > Stronger Rural Areas > Governance >

This Good Practice Webinar, organised by the Rural Pact Support Office, will explore how territorial instruments and approaches – such as LEADER/CLLD, Integrated Territorial Investments (ITIs), and Smart Villages – work in practice. It will showcase successful experiences from across rural Europe and share insights and lessons that can inform future implementation.

Objectives

- Showcase good practices that highlight lessons learned, success stories and practical insights to inform project implementation and future policy.
- Build participants' capacity to draw insights and lessons that improve the design and implementation of territorial instruments in rural areas through the National and Regional Partnership Plans.

The webinar is targeted at public authorities at national, regional and local levels, programme designers and implementers, and promoters of territorial instruments, including potential local project holders, and local, regional and national private and public actors.

Agenda

English language
Agenda
@RuralPact - 310.38 KB
Download

Background

Territorial instruments and approaches such as LEADER/CLLD, Integrated Territorial Investments (ITIs), and Smart Villages are essential mechanisms for delivering rural development policies across the European Union. They enable integrated, place-based solutions, foster innovation, strengthen local ownership and promote multi-level governance. By bringing together communities, businesses, public authorities and civil society, these approaches support co-created responses to challenges such as demographic decline, limited infrastructure and social exclusion.

ITIs allow the combination of different EU funds to address complex territorial needs, linking large-scale and small-scale projects, while LEADER empowers rural communities to design strategies tailored to their local contexts. Smart Villages add an innovative dimension, helping communities harness digital, social and green solutions to improve quality of life.

As the EU prepares the post-2027 rural policy framework, the proposed **National and Regional Partnership Plans (NRPPs)** offer a key opportunity to simplify funding and better address rural needs in an integrated manner. To build on solid foundations in the current programming period and fully unlock the potential of territorial instruments and tools in the future, it is important to enhance awareness of the opportunities they offer.

Rural stakeholders will play a strategic role in shaping integrated territorial development instruments and approaches within the future policy framework at national and regional levels, ensuring they effectively respond to the needs of rural territories.

Useful links

- ▶ **Presentations** available on the [website](#)
- ▶ **Participants lists** to encourage networking
- ▶ **Video recordings** of presentations
- ▶ **Highlights Report**

RPSO events in 2026



Good Practice Webinars

- [Generational renewal in rural businesses beyond farming: Empowering youth, supporting elders: 10 Jun 2026](#)
- [Unlocking rural competitiveness: Sep 2026](#)
- [Rural resilience in a changing world: responding to climate, conflict and disinformation: date tbc](#)

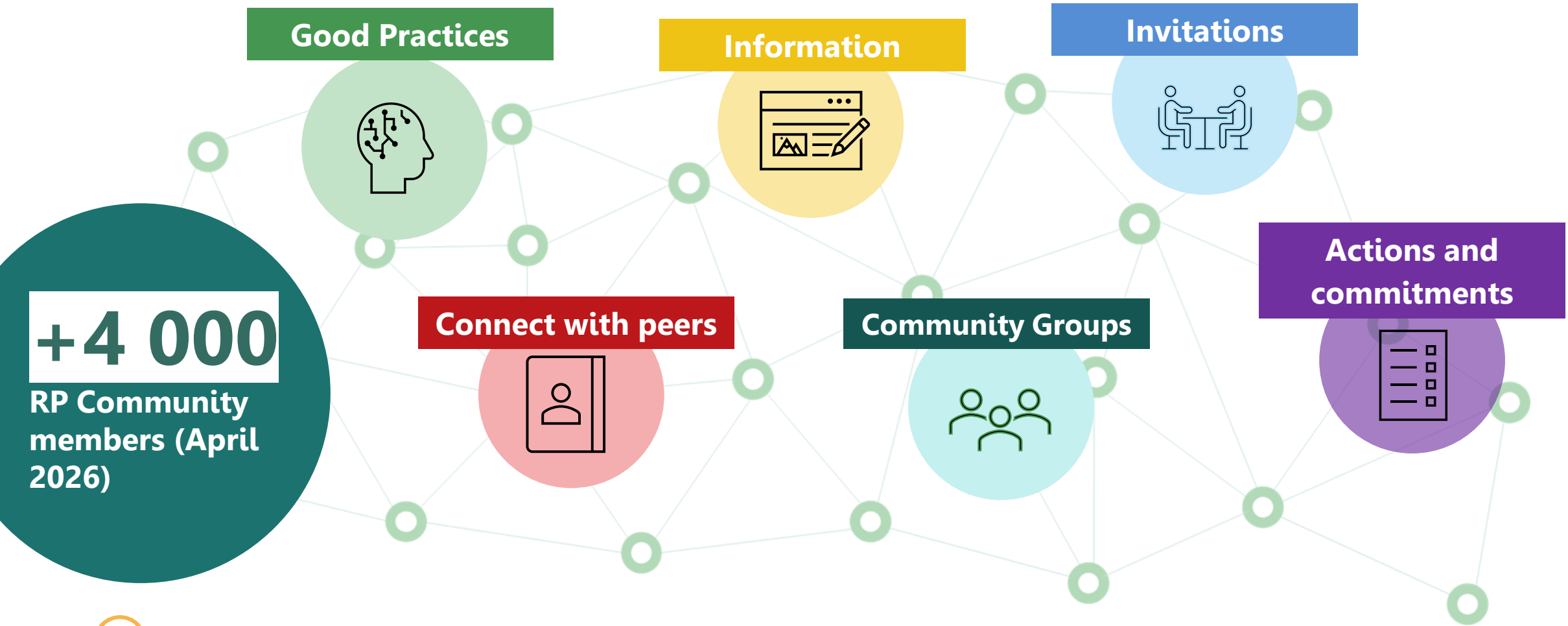


Policy Labs

- [Anchoring rural areas in the National and Regional Partnership Plans \(3 June 2026, Brussels\)](#)



Join the Rural Pact Community Platform



+4 000
RP Community
members (April
2026)

➔ Join the Rural Pact Community Platform - https://ruralpact.rural-vision.europa.eu/become-member_en



Scan me



Thank you!

Join the Rural Pact Community and online platform

www.ruralpact.rural-vision.europa.eu/become-member_en



www.ruralpact.rural-vision.europa.eu

