



# First ITI experience in rural area in Italy

## **Leonardo La Rocca**

Lombardy Region – CISA Consulting

Good Practice Webinar 'Territorial instruments (LEADER/CLLD, Integrated Territorial Investments, and Smart Villages): lessons for the future

Online, 22 April 2026



# Slide title

- ▶ **Valmalenco valley | *From tourist resort to depopulated valley***
- ▶ **Integrated Territorial Investment (I.T.I.) | *The Valmalenco experience***
- ▶ **Valmalenco Integrated Territorial Investment (I.T.I.) | *Sources of funding***
- ▶ **InValmalenco I.T.I. | *Pathways***
- ▶ **InValmalenco I.T.I. | *Contents: core projects/ Results so far/Impact/Key success factors***
- ▶ **InValmalenco I.T.I. | *Recommendations***

# Valmalenco valley | *From tourist resort to depopulated valley*



Chiesa in Valmalenco



Caspoggio



Lanzada



Spriana



Until the 1960s, it was based on summer tourism, then, with the construction of ski lifts, it also became a **winter tourist resort**, as well as attracting a strong interest in mountaineering.

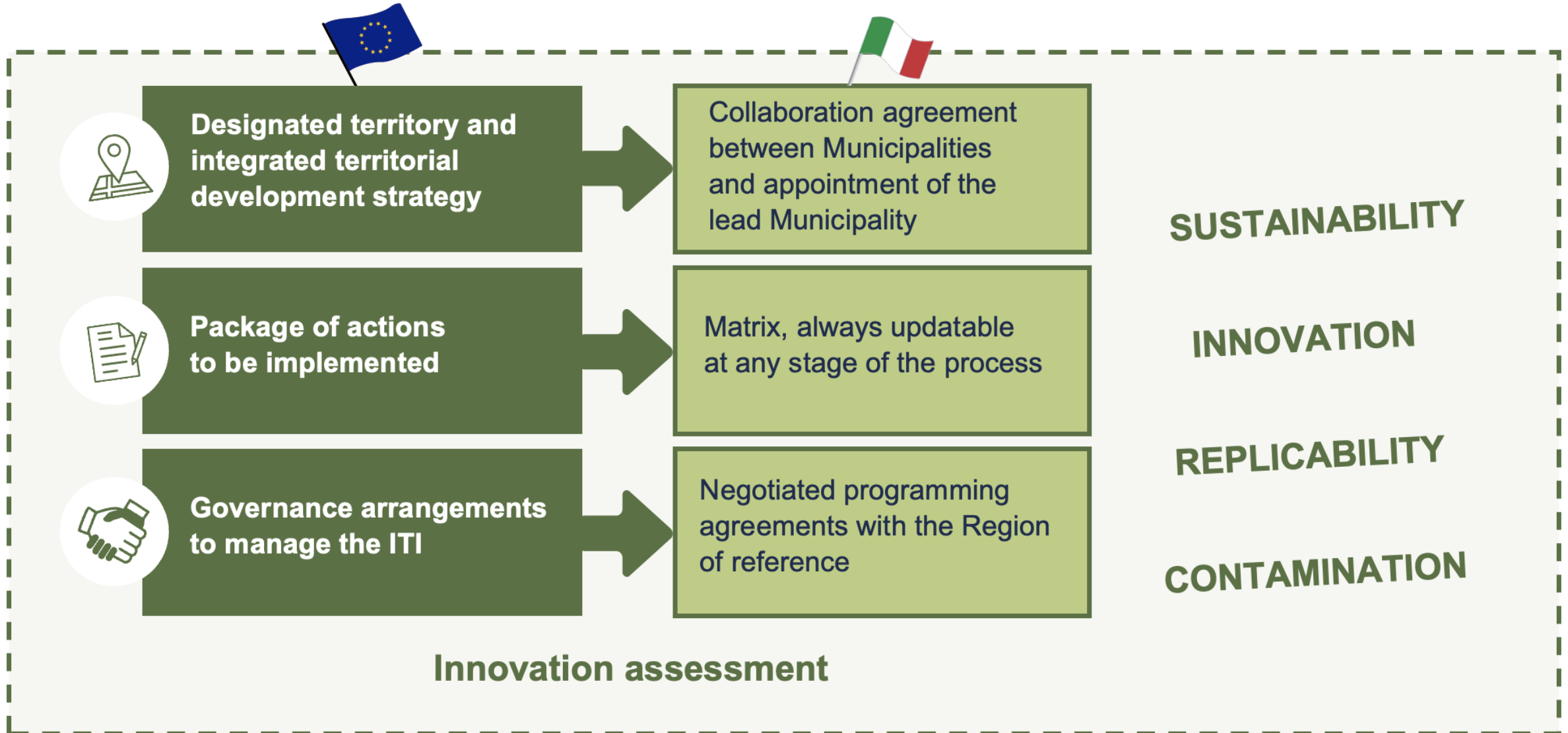
In recent decades, however, the area has suffered progressive **depopulation** and a **contraction of economic activities**.

**Inhabitants** <6.000

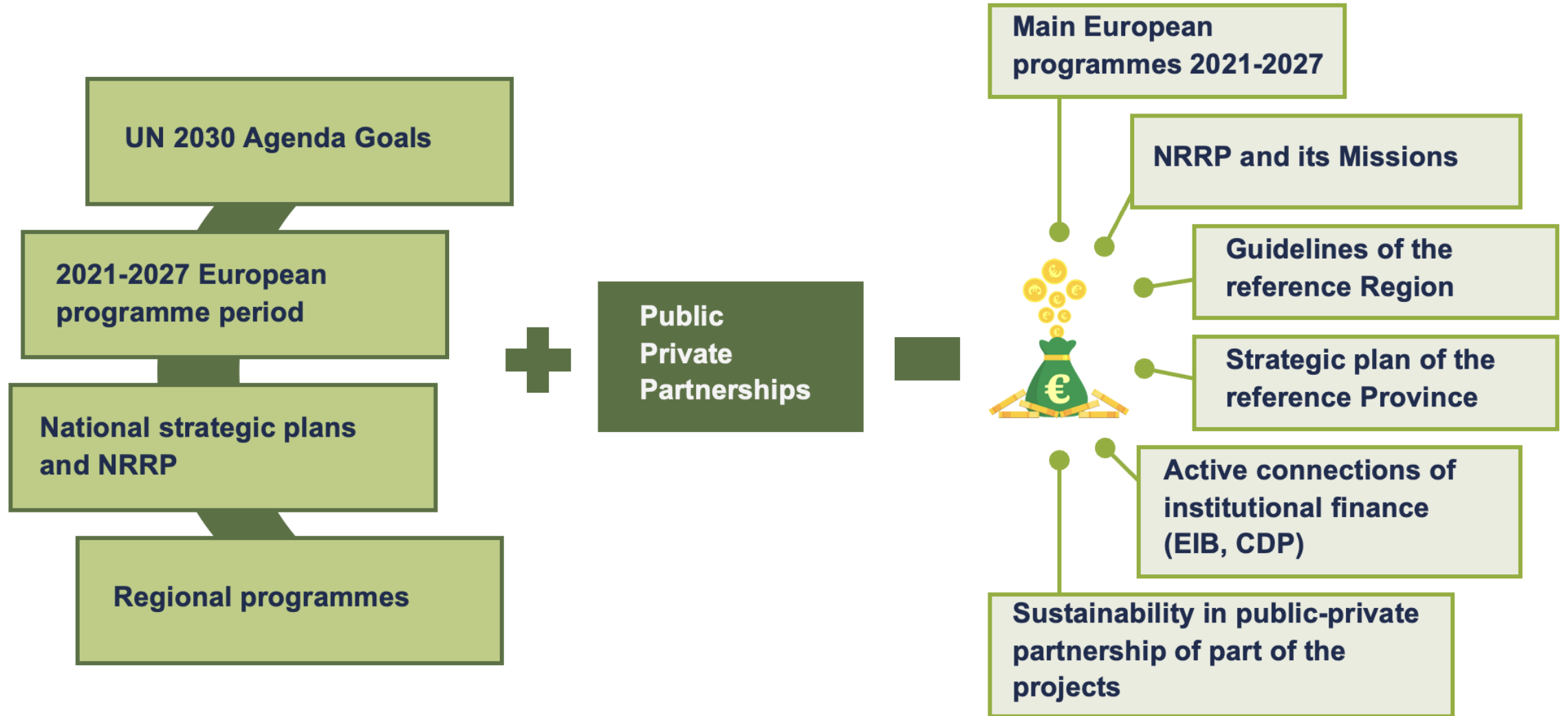
**Tourists** >450.000

**Second homes** >4.000

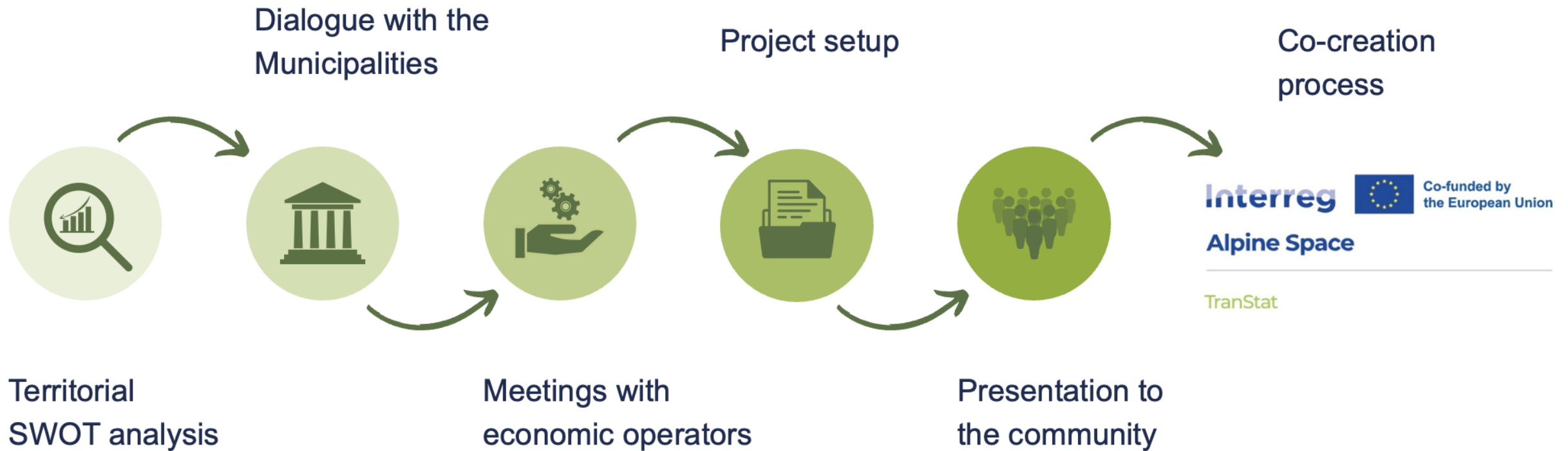
# Integrated Territorial Investment (I.T.I.) | *The Valmalenco experience*



# Integrated Territorial Investment (I.T.I.) | Sources of funding



# InValmalenco I.T.I. | Pathways



# InValmalenco I.T.I. | Content

**30** PROJECTS  
COLLECTED

**90** MLN €  
VALUE

**9** YEARS  
ACTIVITY

**6** THEMATIC CORRIDORS IDENTIFIED

- 1 Mobility
- 2 Urban regeneration
- 3 Sustainable economic development
- 4 Territorial identity
- 5 Energy transition
- 6 Sustainable transition



**CHIESA IN  
VALMALENCO**

Regeneration of the hamlet  
of Primolo



**CASPOGGIO**

Quality wellness for  
a smart bio area



**LANZADA**

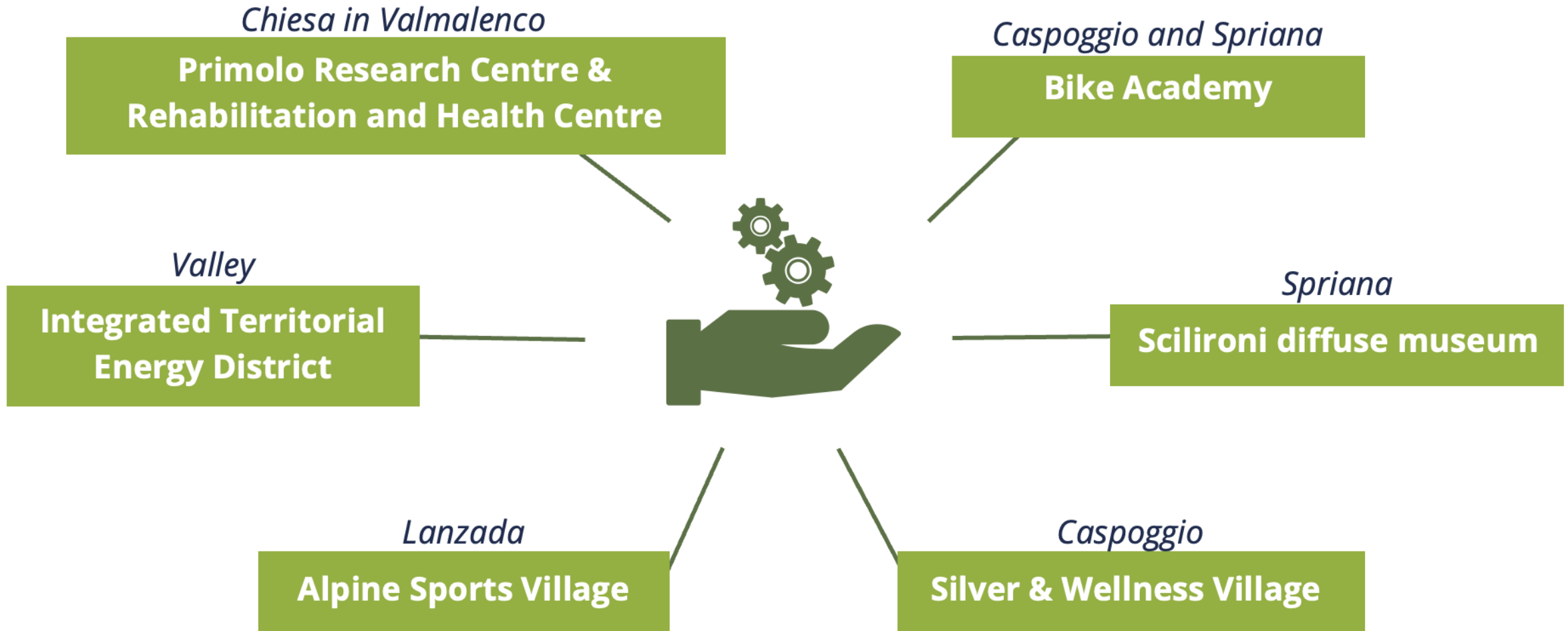
Widespread and inclusive  
outdoor sports hub



**SPRIANA**

Research and development  
hub for e-bikes

# InValmalenco I.T.I. | Contents: core projects



# InValmalenco I.T.I. | *Results so far*

YEAR 1

**20** MLN €  
ACHIEVED

INFRASTRUCTURE



YEAR 2

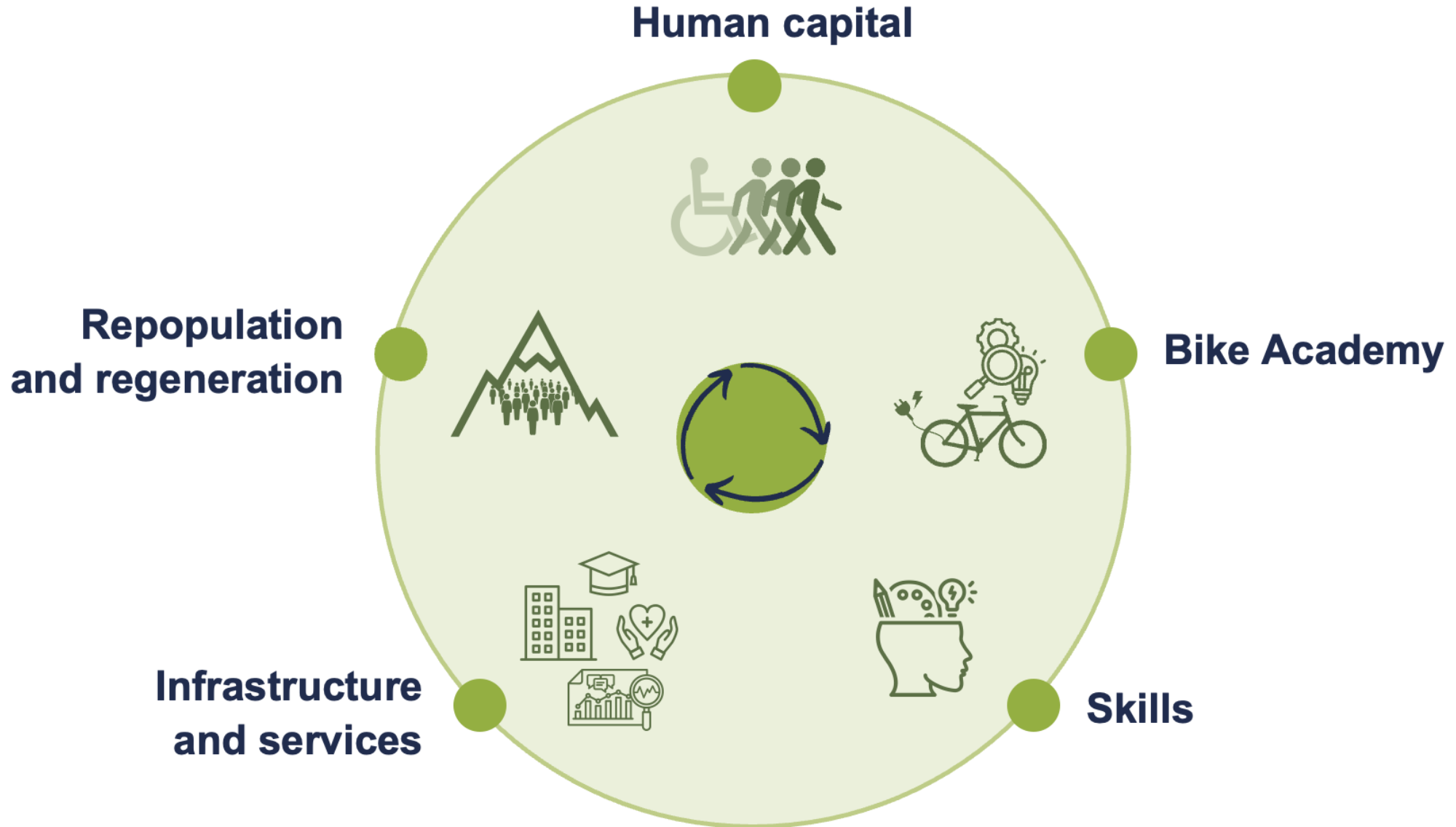
**15** MLN €  
ACHIEVED

DERIVATIVE SERVICES



PPP

# InValmalenco I.T.I. | *Impact*



# InValmalenco I.T.I. | *Key success factors*

*How to bring the secondary sector back into mountain territories?*

Valmalenco:  
a place to develop  
**functional skills** for SMEs  
and large industries

Connection with regional  
and trans-regional **policies**

**Innovation:**  
PPPs and Alliances for  
Innovation

**I.T.I.:** tool to create  
customised solutions  
and creative and  
financial model

# InValmalenco I.T.I. | *Challenges and Key success factors*

*How to bring the secondary sector back into mountain territories?*

**Sustainable transition**

**Community engagement**

**Correct identification of sources of funding**

**Adaptability and resilience of the model identified during the development of the model itself**

Valmalenco:  
a place to develop  
**functional skills** for SMEs  
and large industries

Connection with  
regional and trans-regional  
**policies**

**Innovation:**  
PPPs and Alliances for  
Innovation

**I.T.I.:** tool to create  
customised solutions  
and creative and  
financial model

# InValmalenco I.T.I. | *Recommendations*

- 1** The **I.T.I. model** offers prospects, including financial ones, for meeting the needs of mountain territories
- 2** Repopulation cannot take place on the basis of tourism alone, but must include an **innovative and systematic vision**
- 3** Employ a **top-down approach** to develop solutions, and then validate them with a **bottom-up method**
- 4** **Co-creation** must be the first step



# Thank you!

**Join the Rural Pact Community and online platform**

[www.ruralpact.rural-vision.europa.eu/become-member\\_en](http://www.ruralpact.rural-vision.europa.eu/become-member_en)



[www.ruralpact.rural-vision.europa.eu](http://www.ruralpact.rural-vision.europa.eu)

