



BE-Rural

Bio-based strategies and roadmaps for enhanced rural and regional development in the EU





- private, not-for-profit think tank for environmental research and policy analysis
- based in Berlin, Germany
- approx. 100 people dedicated to improving environmental policy, sustainable development and policy practice

→ www.ecologic.eu

- “bioeconomy” as a cross-cutting theme
- aiming to foster the discourse on the opportunities and risks of the European bioeconomy
- supporting the participatory development of national and regional bioeconomy strategies
- applying the principles of action research

→ www.ecologic.eu/bioeconomy



Promoting Stakeholder Engagement and Public Awareness for a Participative Governance of the European Bioeconomy

2015 – 2018

www.bio-step.eu



Bio-based Strategies and Roadmaps for Enhanced Rural and Regional Development in the EU

2019 – 2022

www.be-rural.eu



Concepts, tools and applications for community-driven bioeconomy development in European rural areas

2022 – 2025

www.scaleup-bioeconomy.eu

[→ www.ecologic.eu/eu-research](http://www.ecologic.eu/eu-research)



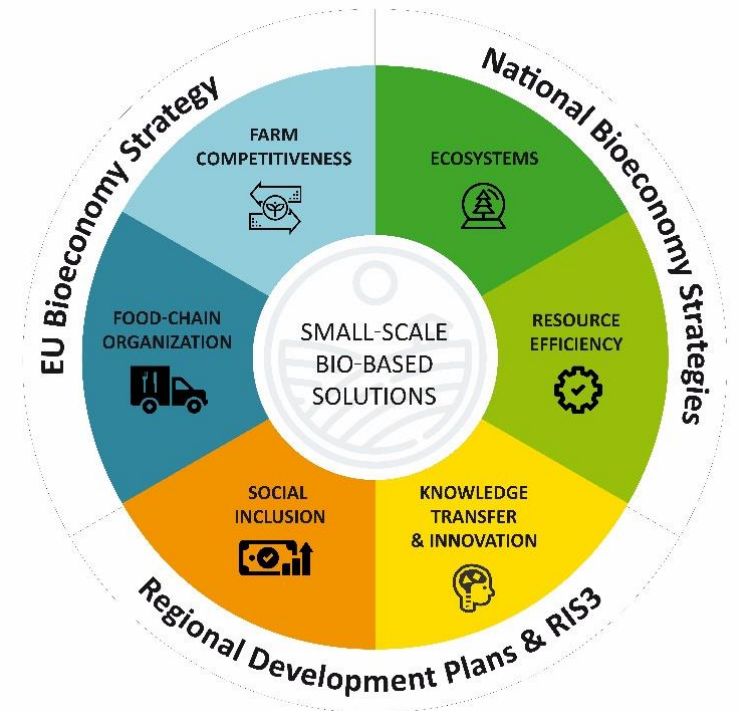
Bio-based business models, e.g. developed in SCALE-UP

- Build on **regional biomass resources** (e.g., agricultural and forest residues, side streams from the food industry)
- Promote **regional added value** for rural communities (new employment opportunities, demand for innovative and sustainable products and services, efficient use of natural resources) and to respond to global challenges in locally adapted ways
- Support value chains that **feature a wide range of regional actors**, thereby contributing to distribution of income among the local communities
- Need to consider in first line the **environmental sustainability**, which means that the inputs and outputs of bio-based enterprises – in terms of used, consumed or degraded resources and emitted pollutants – shall not be as high as to hamper the regeneration of the regional ecosystem
- Build on strong **stakeholder engagement and community-led local development** (CLLD)



Bio-based business models, e.g. developed in SCALE-UP

- **Community-led local development (CLLD)** is focused on integration of different stakeholder groups and their viewpoints in the activities, particularly the establishment of the regional platforms and for the identification and promotion of specific bio-based solutions
- Bioeconomy is embedded in the context of **rural development** - focus on the six priorities of the European agricultural fund for rural development (EAFRD) (see Figure)



- Increase **support for innovative formats** to encourage citizen dialogue and better capture feedback on regional bioeconomy issues.
- Create new or promote existing frameworks at regional level that support bioeconomy stakeholders in implementing capacity-building activities.
- Enable regional multi-actor partnerships to formulate inclusive bioeconomy strategies and roadmaps.
- Upskill entrepreneurs to design their bioeconomy products and business models based on a) real market needs and b) serious consideration of ecological limits.



BE-Rural Policy Paper

Promoting Effective Co-creation Spaces in Regional Bioeconomies



Main recommendations:

Increase support for innovative formats to encourage citizen dialogue and better capture feedback on regional bioeconomy issues. Awareness-raising activities continue to play a critical role in accelerating the transition to a sustainable bioeconomy. However, more innovative formats, such as living labs, should be piloted in order to capture citizen feedback.

Create new or promote existing frameworks at regional level that support bioeconomy stakeholders in implementing capacity-building activities. Capacity-building and knowledge-exchange activities should be integrated in regional and rural development policies with dedicated financial resources. This would facilitate building capacity over time via continuous engagement, allowing stakeholders to position themselves strategically in participatory activities.

Enable regional multi-actor partnerships to formulate inclusive bioeconomy strategies and roadmaps. Regional clusters, local action groups and similar organisations representing a broad spectrum of stakeholders should receive targeted support, encouraging them to contribute to bioeconomy-related discussions as part of a broader rural development discourse.

Upskill entrepreneurs to design their bioeconomy products and business models based on a) real market needs and b) serious consideration of ecological limits. The valorisation of available biomass resources should be combined with a notion of user-centric product development bound by ecological limits if all dimensions of sustainability are to be adequately considered.

Ambition needs to be to open up the discourse and to address benefits *and potential risks* of bioeconomic developments: adverse environmental and socio-economic impacts

The participation ladder:
education and information → consultation → co-production of knowledge

Involvement of marginalized groups / 'unusual suspects' in the project activities: theory vs. practice

Priorities of local stakeholders might not be in line with ambitious project goals – how to manage?





Thank you for your attention



This project has received funding from the European Union's Horizon 2020 research and innovation programme under grant agreement No 818478

