

POLICY ACTION LAB

Territorial development for the green transition: Harnessing the potential of rural communities
19 september 2024 (online)

ITI WATER AND LANDSCAPE ECOSYSTEMS – ALGARVE AND ALENTEJO (PORTUGAL)
ADDRESSING ENVIRONMENTAL ISSUES THROUGH AN ITI

Aquiles Marreiros | amarreiros@ccdr-alg.pt
Regional Programme ALGARVE 2030

ITI Water and Landscape Ecosystems - Algarve and Alentejo Territory and Allocated Fund



2 NUTS II

3 NUTS III

17
municipalities

Targeted
Population
118.150
(INE, 2021)

ERDF
52,8 M€

PR ALGARVE 2030
32,5 M€

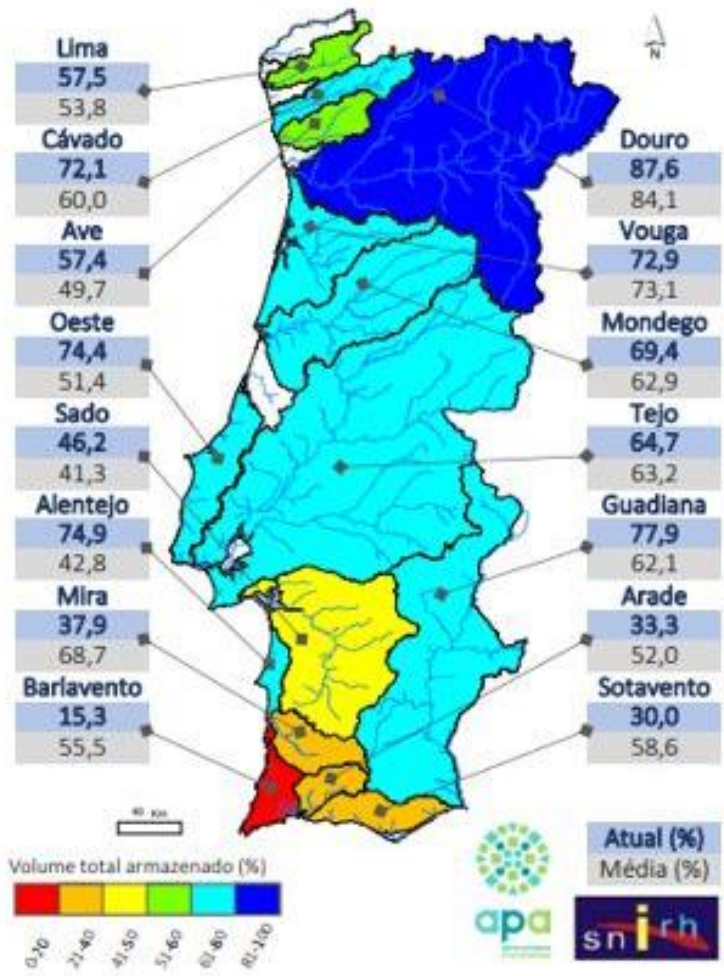
PR ALENTEJO 2030
20,3 M€

POLICY OBJECTIVES:

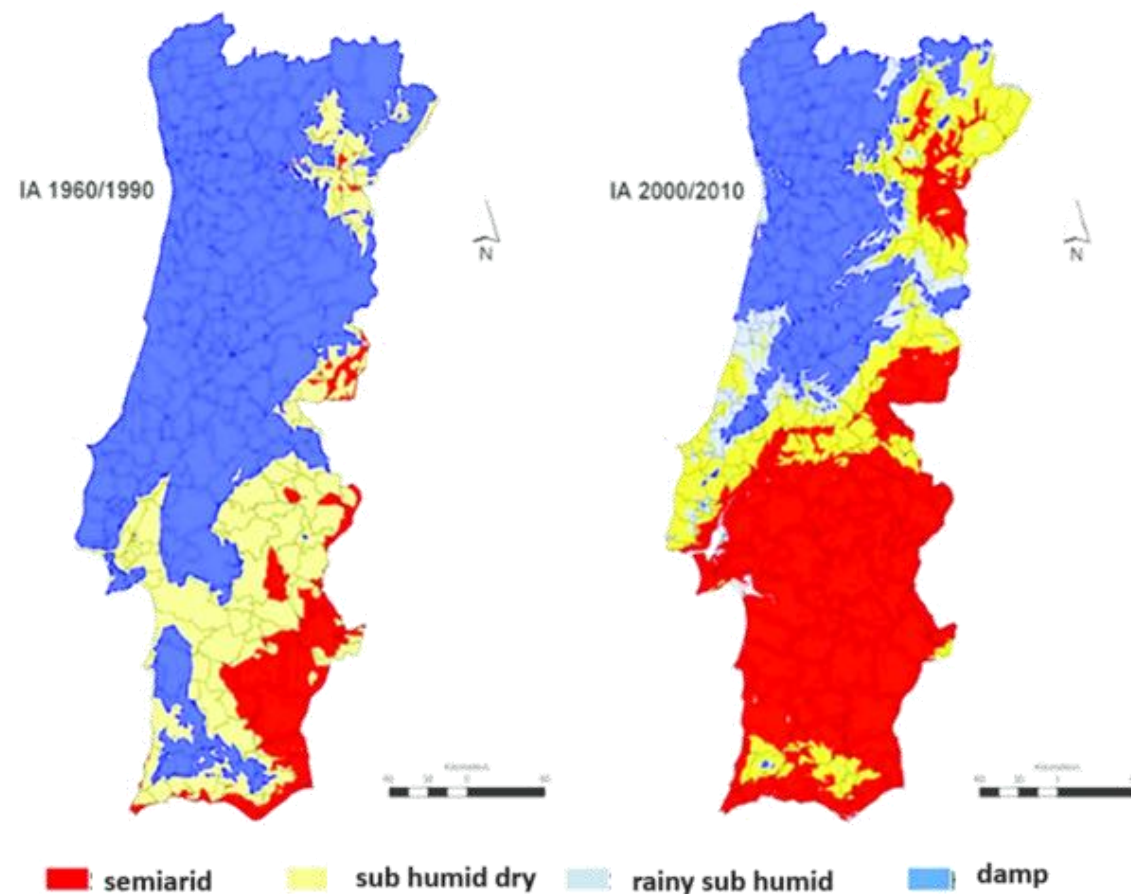
- P.O. 1 (SO1 - R&D; SO3 - SME competitiveness; SO4 - entrepreneurial discovery).
- P.O. 2 (SO4 - risks and climate change; SO6 - circular economy; SO7 - protection of nature and biodiversity).
- P.O. 5 (SO2 - social, economic and environmental development of non-urban areas)

Water stored in dams (%)

16.09.2024



Aridity Index



STRUCTURING PROJECTS	No. of Indicative Initiatives	No. of Indicative Actions
1- Protection and management of water resources	12	17
2- Protection and enhancement of terrestrial ecosystems, species and landscape	19	38
3- Ecological enhancement of water lines and riparian galleries	22	38
4- Reuse of water from alternative sources	11	23
5- Control of flows and elevations of the main water lines and reservoirs	4	4
6- Cordão Verde Bio-Region of the Algarve and Alentejo	8	14
7- Enhancement of green spaces in population clusters	10	17
8- Combating and mitigating climate change	2	3
9- Management and protection of forest spaces	5	6
10- Enhancement of natural heritage	2	5
11- Landscape reorganization and management	4	4
12- R&D initiatives and establishment of partnership and knowledge networks	8	14
13- Support for companies with a focus on territory and theme	9	9
14- Training of actors in matters of sustainability and environment	17	27
Total	133	219

Multilevel Governance Model

COORDINATION COMMITTEE

led by representatives from CCDR Algarve, I.P. and CCDR Alentejo, I.P.

ADVISORY COUNCIL

composed of representatives of Administration entities with a thematic focus on ITI, as well as the 3 CIM as representatives of municipalities, and also representatives of the Associations of Local Development (ADL) of both regions

Observatory

Santa Clara - Odemira (24/05)



Odelouca - Monchique (29/05)



Azinhal - Castro Marim (30/05)



Paderne - Albufeira (30/05)



Ourique (2/06)



Almodôvar (2/06)



Querença (26/06)

340 participants
123 entities

On environmental issues

- Problems and solutions have no administrative boundaries;
- Intensity, severity and durability of risks and threats;
- Water availability limits all dimensions of development;
- ITI territory as a Lab - entrepreneurial discovery processes;
- Relevant critical mass in the ITI themes.

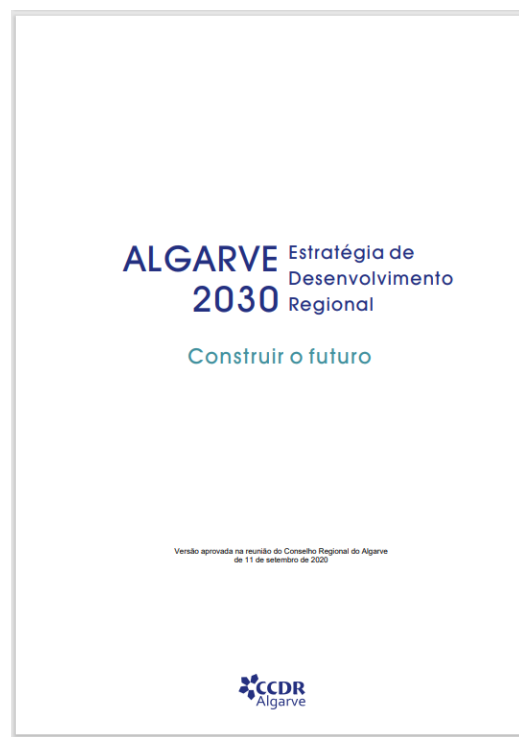
On Governance

- High level sectorial coordination and multilevel cooperation (national government, regional and local administration, citizens and civil society);
- Compliance with the principle of partnership;
- Involvement of actors and continuity of participatory processes at all stages;
- Strong commitment of decision-makers, stakeholders and population to the rural and environmental challenges.

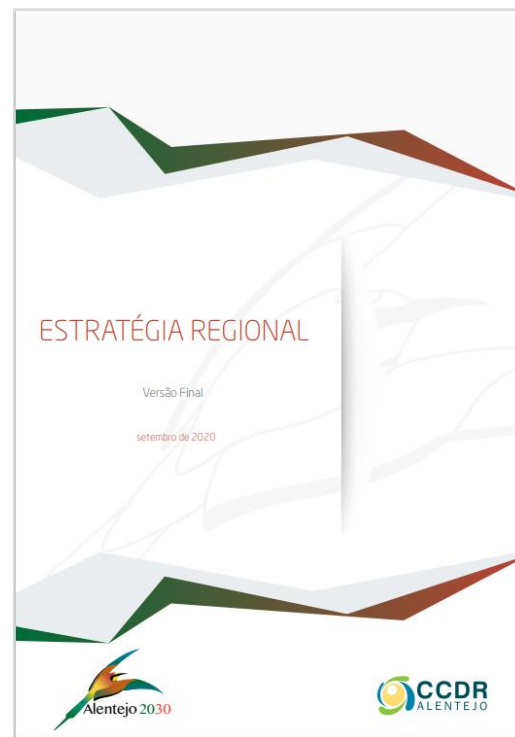
For rural communities

- Something has to change! Territory and communities with successive loss dynamics;
- Local, place-based expertise and knowhow can inform action, promote and attract innovative solutions;
- Experienced and work tradition of LAG's - knowledge, proximity and trust - empowerment of Communities;
- Great rooting of citizen movements and NGO - knowledge production capacity and mobilization of human, technical and financial resources;
- Sustainability as a process and goal!

From Strategies to an Action Plan:



[20201111_Estrategiaalgarve2030aprovada_11set2020.pdf \(ccdr-alg.pt\)](#)



[ER2030.pdf \(portugal2030.pt\)](#)



[ITIAgua-Investimento Territorial Integrado do Algarve e Alentejo.pdf \(ccdr-alg.pt\)](#)



[ITIAgua-Instrumento Territorial Integrado Água e Ecossistemas de Paisagem - Algarve e Alentejo.pdf \(ccdr-alg.pt\)](#)

Thank You!