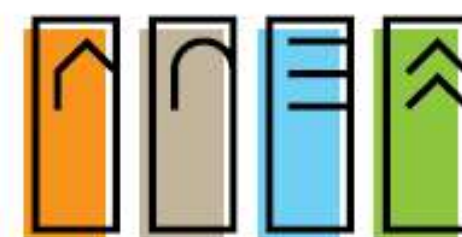




GALMONTAGNAPPENNINO



AREA INTERNA

GARFAGNANA, LUNIGIANA
MEDIA VALLE DEL SERCHIO
APPENNINO PISTOIESE

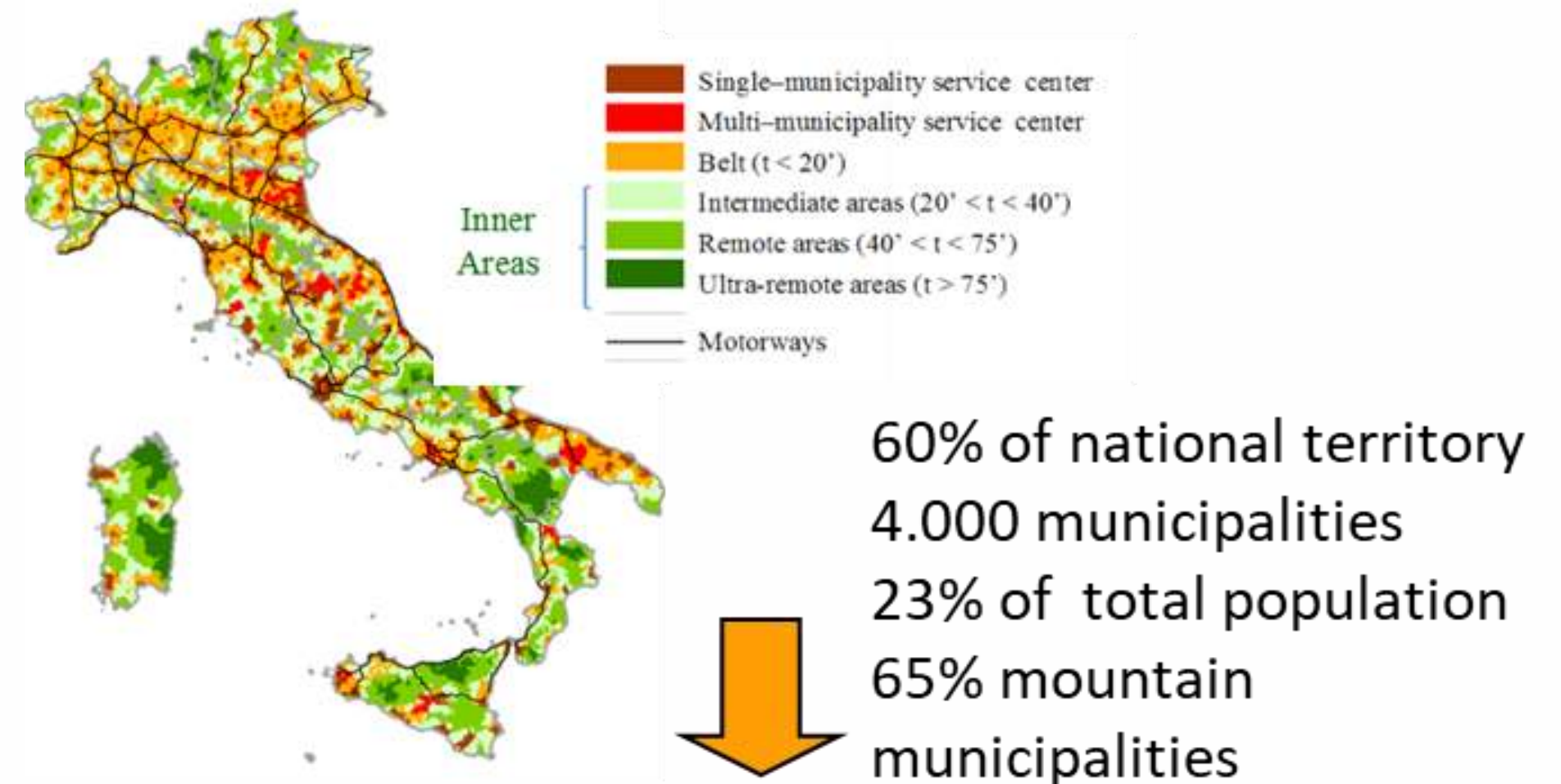
The Italian Inner area strategy supporting local action

Bruxelles, 22 May 2024

Inner Areas Strategy 2014/2020: in brief

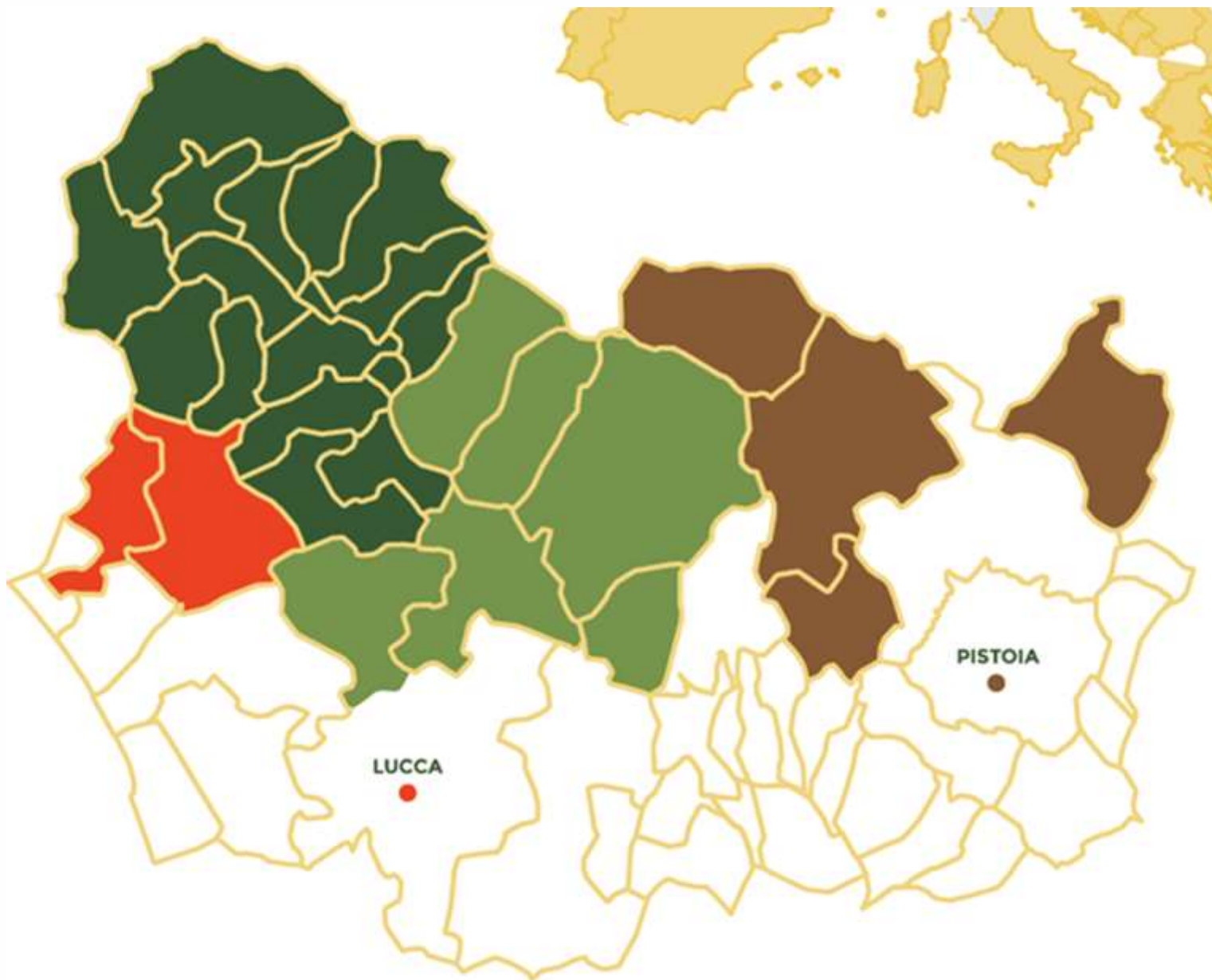
5 main innovations :

- National dimension and multilevel governance (Centres – Regions –municipalities and inter municipalities cooperation)
- In the project areas – at the same time - services improvements (mainly through national policy) and investments in selected development factors (regional policy)
- Multi-fund attitude (EAFRD, ERDF, ESF and National Funds)
- Participatory approach to local development
- Municipalities Associations.



Ultimate goal of the strategy
Reinforcement of demographic structure

LEADER approach and concerned territory

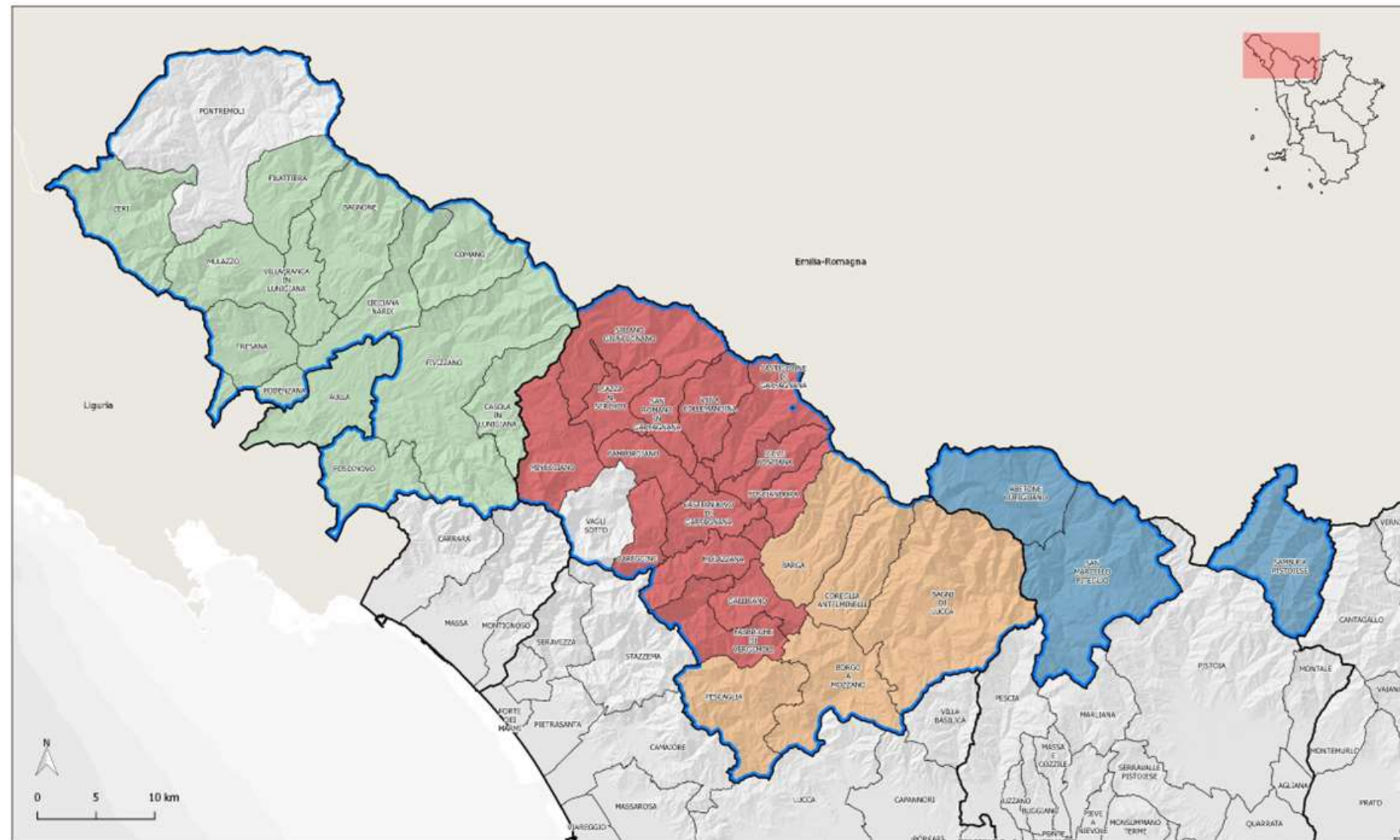


The **LAG Montagnappennino** promotes the development strategy of the area and is responsible for implementing it.



The LAG has decision-making powers and a budget, it also has a long history of participatory processes: the first strategy dates back in 1991 (LEADER I) a pioneer initiative in the Italian context and it can be considered one of the first examples of perennial institutionalized social participation guided by deliberative systems theories.

Overlapping Inner areas and LAG territory



Legenda

- Perimetro dell'Area interna
- Unioni dei Comuni**
 - Unione Comuni Garfagnana
 - Unione dei Comuni Media Valle del Serchio
 - Unione di Comuni Montana Lunigiana
 - Unione di Comuni Montani Appennino Pistoiese

- 36 Municipalities**
- 4 Union of Municipalities**
- 3 Provinces**
- 2 Parks/ 2 Unesco Areas**
- 108.000 inhabitants**
- 2 LAGS Montagnappennino and Lunigiana**

A multi-sector strategy and an integrated governance model



Inner Areas Strategy and the LAG

Montagnappennino

**Technical support of the
Montagnappennino LAG**



GALMONTAGNAPPENNINO

In the SNAI 2021/2027, the two LAGs Lunigiana and Montagnappennino will take on a dual role, one still as technical support and one in managing the FEASR part of the Inner Area Strategy (1 million euros)

**Office for management
of the Area Strategy
+
technical support
Manager and Operations
Team**

**Political governance
Technical governance**



AREAINTERNA
GARFAGNANA, LUNIGIANA
MEDIA VALLE DEL SERCHIO
APPENNINO PISTOIESE

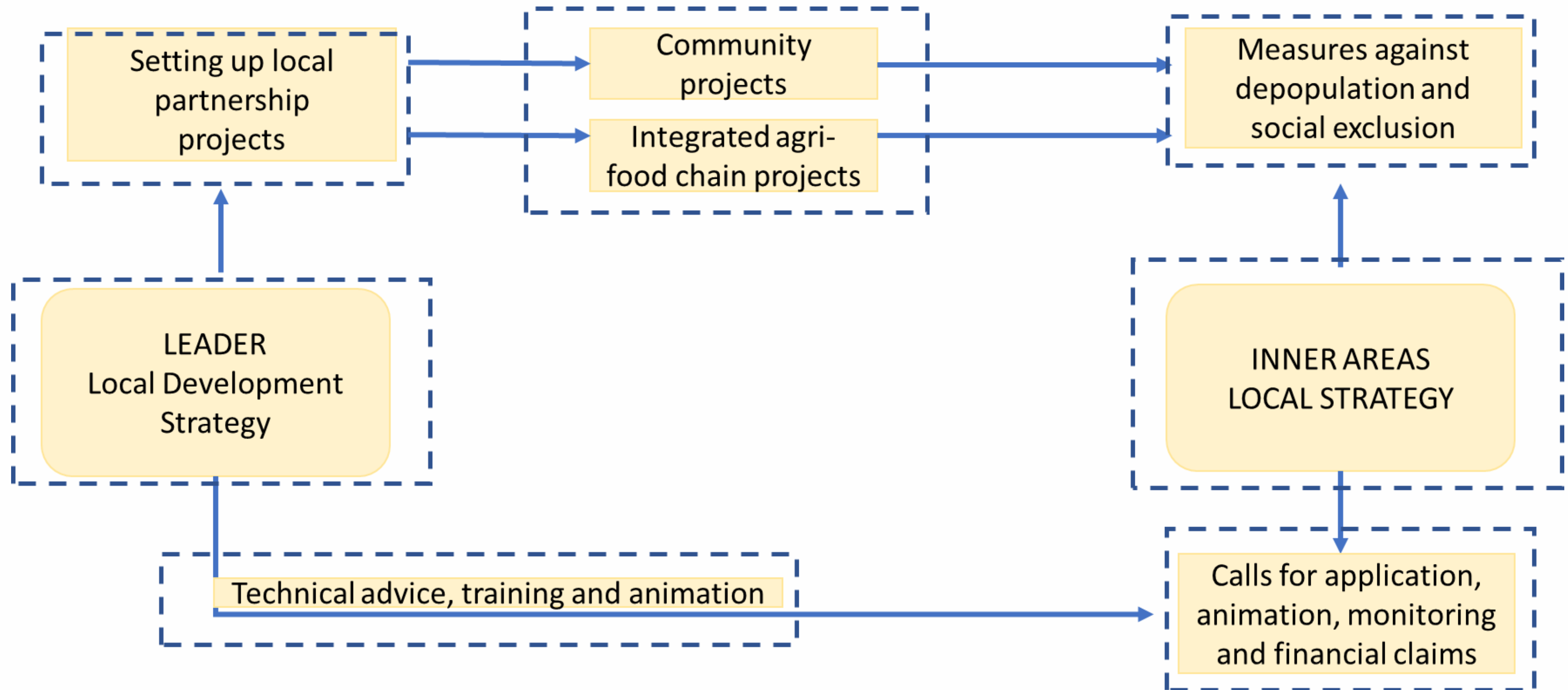
Union of Municipalities



Municipalities

Many synergies between LEADER and Inner Area

Strategy



Inner Area Strategy Territorial Strategy objectives and activities

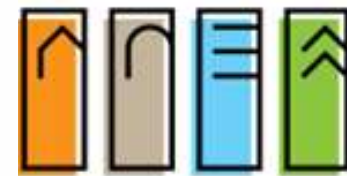
Land conservation

- safe lands
- seismic classification

Mobility

- active railway line
- Integrated paths of modernization and development of mountain mobility

education and training



AREA INTERNA
GARFAGNANA, LUNIGIANA
MEDIA VALLE DEL SERCHIO
APPENNINO PISTOIESE

- educational multifunctionality
- mountain toy libraries
- from the territory to create future

Health and social welfare

- telemedicine
- basic aggregate services to the population
- close to social fragility

Local development

- biodiversity
- economic development
- sustainable tourism

LEADER Territorial Strategy objectives and activities

- Tourism
- infrastructure,
- urban landscape redevelopment

Non-productive investments

Non-agricultural activities

- Support for micro and small enterprises

Community Projects

- community projects for enhancement of common goods and services



Non-agricultural start-ups

- Support for new business with priority for young people and women

Smart Villages

- Strategic cross-sectoral wide area projects

Innovation

- development of new technologies and processes

Thank you

Mirta Sutter

gal@montagnappennino.it

www.montagnappennino.it



@galmontagnappennino



@galmontagnappennino



GAL MontagnAppennino