

PETR Pays Vallée du Loir  
Rue Anatole Carré - 72 500 VAAS  
Bruno WEBER REGNIER  
Director  
[direction@pays-valleeduloir.fr](mailto:direction@pays-valleeduloir.fr)  
Karine BORDEAU  
Leader programme Facilitator  
22 May 2024

# PETR PAYS VALLÉE DU LOIR PRESENTATION

Co-writer  
Marie PETITJEAN  
Head of Climate-Energy service



CE PROJET EST CO-FINANÇÉ PAR LA RÉGION  
ET LE FONDS EUROPÉEN AGRICOLE POUR LE DÉVELOPPEMENT RURAL.  
L'EUROPE INVESTIT POUR LES ZONES RURALES.



# Summary

1. « Pays »
2. PETR "Pays Vallée du Loir" : Purpose, Funding, Governance, team
3. LAG Pays Vallée du Loir

# 1-« Pays »

## Definition

- Administrative category for spatial planning
- Common economical, ecological, cultural and social interests
- Small region recognizable by its landscapes
- Support a territory's project

## Pays Vallée du Loir

➡ An alluvial valley with limestone slopes crossed by the Loir river and its tributaries

# 1-« Pays »

## Territory

### Administrative boundaries - PETR Pays Vallée du Loir



# 1-« Pays »

## Territory

### Administrative boundaries- PETR Pays Vallée du Loir

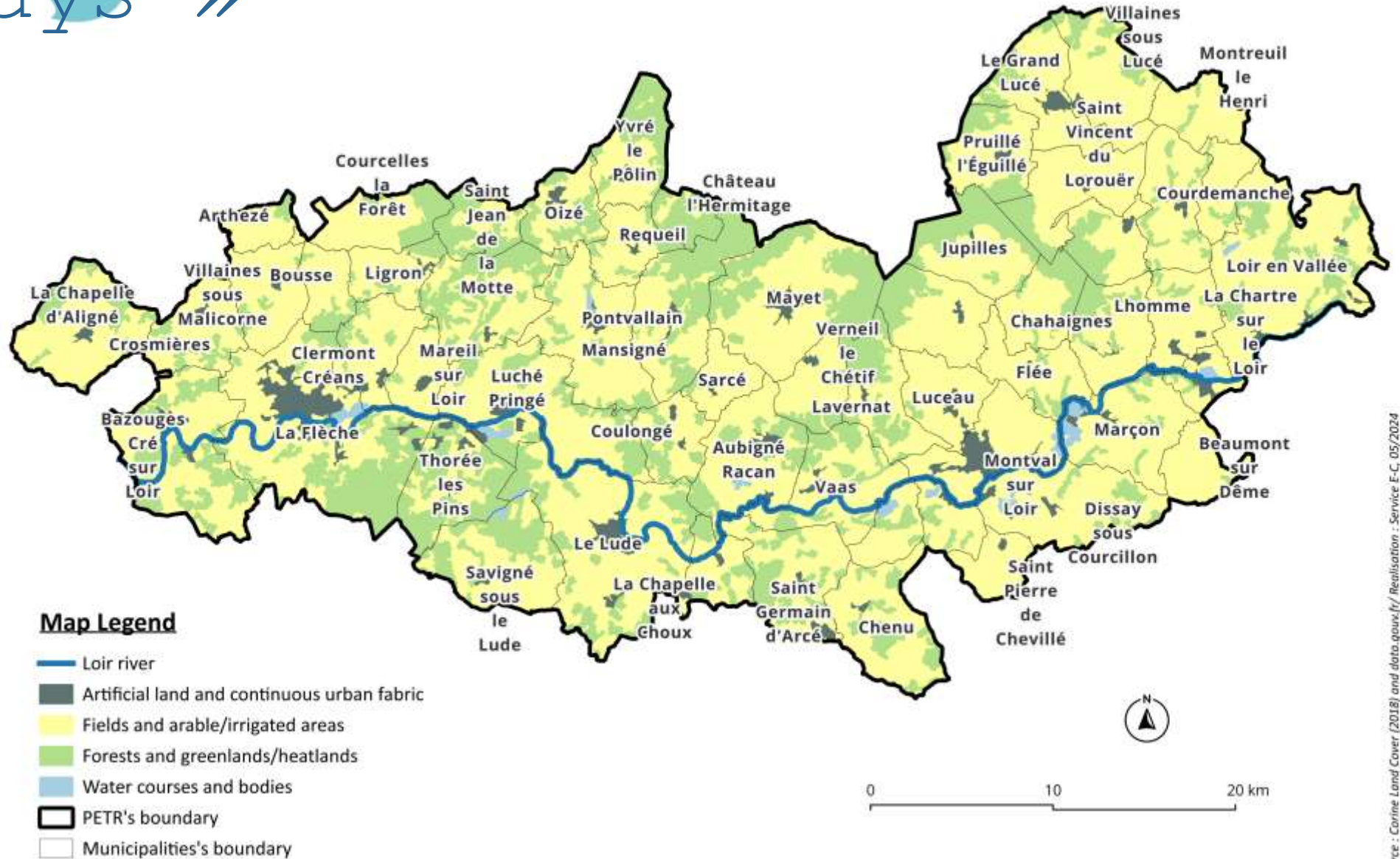


# 1-« Pays »

## Territory



### Land Cover- PETR Pays Vallée du Loir



# 2-PETR Pays Vallée du Loir

## Purpose

- Mutualising tool of 3 communities of municipalities (57 municipalities) for local development and transition engineering
  - Thematic areas of supported projects:
    - Territory plan: ScoT ( Territorial coherence scheme), Natura 2000, architectural and landscape chart, etc
    - Energy and environment: Climate-Air-Energy Plan, energetic renovation for individuals, energetic renovation for public heritage, forest chart, etc
    - Culture and heritage: art and history land label, local heritage inventory, creation and animation of cultural, natural and architectural heritage development programmes including new technologies and educational measures, 2 festivals (one for young public, one for all ages)
  - Financing emerging projects thanks to LEADER funding

# 2-PETR Pays Vallée du Loir

## Governance



Proposals and decisions



### Comité Syndical - General Committee

- 43 elected members of the local authorities
- Governed by a president
- Open sessions for citizens & local media
- Makes decisions regarding budget and projects

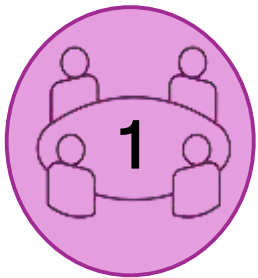
### Bureau

- Members of the General Committee
- Collects the opinions and proposals expressed by the committees
- Closed sessions
- Guides the General Committee decisions
- Is source of proposals



### Conseil de développement territorial -Territorial development Council

- Volunteered members of the local community representing economical, social, cultural, educational, scientific and associative fields
- Is source of proposals and advices



### Mayors' conference



## Governance - 6 thematic committees



- Finance and human resources

Administrative

- Contractual politics and LAG

- Territory attraction

Territorial development

- Mobility

- Climate and Energy

Energy and Climate

- Culture and Heritage

Culture and Heritage

# 2-PETR Pays Vallée du Loir

## Funding

- Contribution of the communities of municipalities: in 2024, a contribution of 5,75 € per inhabitant based on 73 436 inhabitants
- Funding programs
  - European level: Leader of FEADER, FEDER
  - National level: ADEME, DRAC, FNCCR, ANAH
  - Regional level: Fonds SARE, Mission Inventaire du patrimoine, Eté culturel
  - County level: Eté culturel, résidence d'artistes, PIG

# 2-PETR Pays Vallée du Loir

## Funding

- Activities generating revenue:
  - Visits for groups or schools and summer activities related to the natural and architectural heritage
  - Engineering of the framework convention with municipalities and communities of municipalities regarding their Energy Saving Certificates

# 2-PETR

Pays Vallée du Loir

## Financial programmes

- Examples*
- DRAC (French Regional Department of Cultural Affairs) enabling to initiate mutual knowledge of cultural actors
  - LEADER financing LAG bottom-up strategy

## Public institutions

*National Obligations*  
 e.g. ○ Renewable energy acceleration zones



*Engineering/Counselling/Empowering*  
*Communicate and coordinate*

- Most effective way**
- 📞 On the phone
  - 👥 In-person as much as possible where the public is located



- Bring knowledge of other potential funding sources
- Provide his/her expertise in a specific field
- Assist in the structuration of a project: documents collection, content writing, etc
- Co-create
- Lead a project on a delegated assignment
- Introduce to a reliable partner
- Train members of municipalities to use a GIS
- Make information accessible to the greatest number

PROJECT

*Work for*

- Inhabitants
- Tourists
- Families
- Companies, shops, craftsmen, farmers
- Elected representatives
- Community agents

*Work with*

- Citizens
- Associations
- Teachers

# 3-LAG Committee and strategy

**16 members for the public body:** elected by each community of municipalities

**13 members for the private body:** Territorial development Council volunteers

**Decisions for 2023-2027:** 50% public body / 50 % private body

**Strategy based on consultations** of local authorities' agents and county agents (social, economic, cultural and environmental fields), LAG members, Territorial development Council members, elected members of local authorities of the 3 communities of municipalities and experts working on agricultural fields

**Projects aiming at:**

- making culture accessible to everyone
- improving the territory sustainability
- reinforcing territorial coherence and bonding among inhabitants

Thank you for your  
attention !



PÔLE D'ÉQUILIBRE TERRITORIAL ET RURAL PAYS VALLÉE DU LOIR

Rue Anatole Carré • 72500 VAAS

Tél : 02 43 38 16 62

[www.pays-valleeduloir.fr](http://www.pays-valleeduloir.fr)