



SOME REFLECTIONS ON THE DAY

EDINA OCSKO, VICE-CHAIR OF THE RURAL PACT COORDINATION GROUP

SMART VILLAGE NETWORK SERVICES / E40

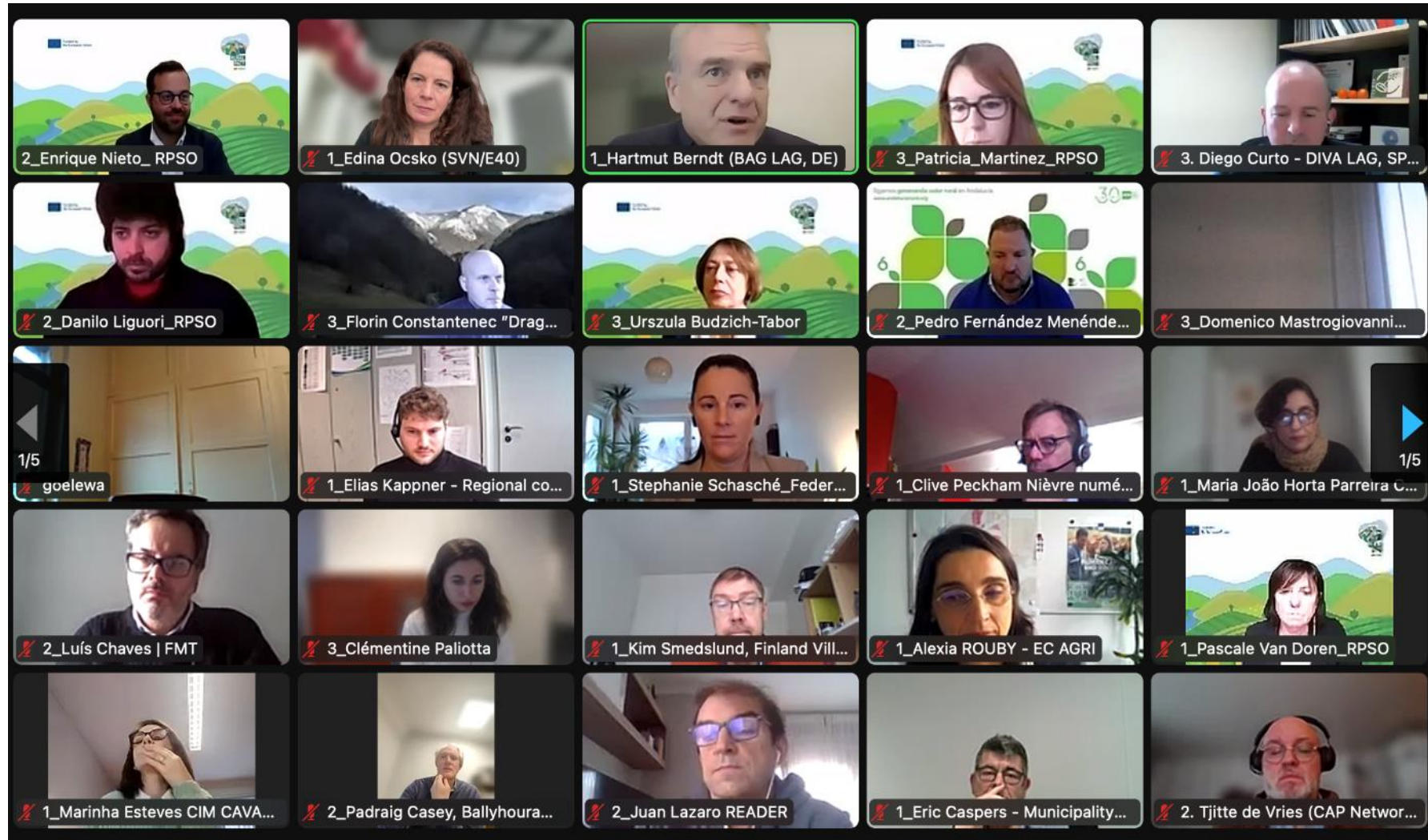
14/12/23 - RURAL PACT POLICY LAB



REFLECT ON...

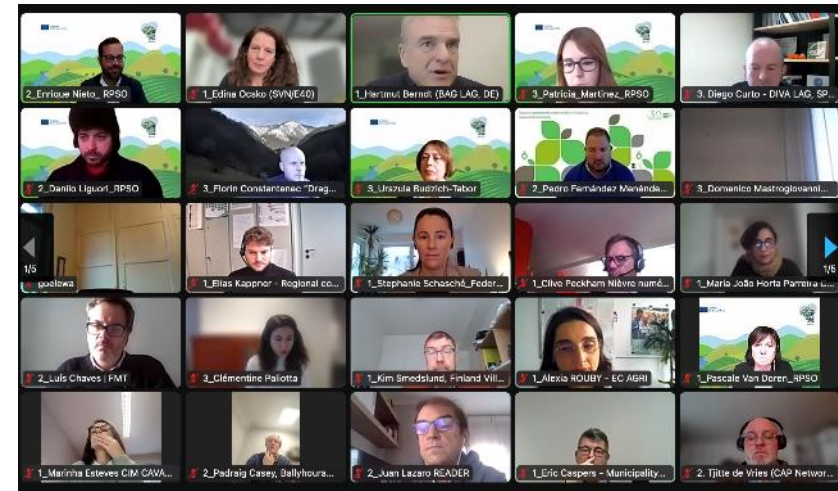
- THE POLICY LAB
- KEY MESSAGES
- NEXT STEPS

1. THE POLICY LAB



ABOUT THIS POLICY LAB

- Great to see the **level of activity** (including often less represented groups, such as PA)
- Inspiring to see **practical examples**
- Topics are important: governance – coordination, synergies of funding, supporting local communities...
- We need to think jointly about **new forms of engagement** (with impact on the ground – e.g. *design thinking*)?
- We need to think about **new target groups**?



“We have the right people telling stories, we don’t have the right people listening.”

Luis Chavez

2. THE KEY MESSAGES

~~IM~~POSSIBLE



“We need to look at the needs of the regions and not of the funding regime.”

Stefan Niedermoser

PRACTICAL IS GREAT

- **Examples that show you the HOW** (tools at EU level, SCO applied, one-stop-shops, capacity-building / local project managers, engaging alternative financing/ involve financial inst. ...)
... especially to also learn also about **challenges & struggles**
- **Focus on supporting local communities & people directly** (in strategic planning, in identifying funding, in accessing funding, in implementing projects)

ENGAGEMENT & SUPPORT OF LOCAL COMMUNITIES / PEOPLE

The ultimate aim is that funding and support reaches local communities more effectively (local / place-based approach).

LAGs are crucial intermediaries in many cases: need to trust them, they build capacity-locally, they help accessing funds for local communities

Regional level:

- Catalonia – wide consultation of civil society
- Regional Coordination Group in Satakunta (Finland)
- Lower Saxony in Germany

National level:

- Czechia – connecting to local examples when planning support, open dialogue

...

“We need to get out of our bubbles. Go and talk directly to local people”
Klaus Ehrlich

SOMETHING NEW STARTED TO SHAPE UP IN THE RURAL POLICY CONTEXT

Rural Agendas (also triggered by the **Rural Pact**) & holistic (beyond the CAP):

- Spanish Presidency Conclusions
- Rural Agenda in France & support mechanisms (Village d'avenir)
- Rural Agenda of Catalonia (engagement process)
- Multi-funded approach of Czechia – Czechia

Importance of coordination of funds / 'rural proofing'

"There is little funding left for what is not mandatory and coordination of funds is not mandatory."

Barbara Faehrmann



Image Copyright @E40



3. WHAT WE DO NEXT?

MOVING UP A GEAR

- Highly inspiring ... but **scratching the surface**
- Initiate dedicated groups that focus more on **specific & practical aspects / the details**
- Commitment : **Follow up on what's happening** as a result of peer-to-peer learning
- Reward **CHANGE**
- **Data**: collect data (e.g. financing - loans/ risks, communication, LAG activities)

(POLITICAL & POLICY) COMMITMENT

There is great **POTENTIAL** in the Rural Pact:

- It **engages** many relevant stakeholders, like YOU
- It has the potential to **impact** on politics and policy (Spanish Presidency Conclusions ...)
- Dedicated “Rural Fund” – adapted EU institutional structure (?)
- Planning for next period is starting **NOW!**