



European Union
European Social Fund
Operational Programme Employment



RURAL VISION: POLICY ACTION LAB



Renáta Kučerová,
Head of CLLD and ITI Projects Unit,
Ministry of Labour and Social Affairs,
Czech Republic



14th Dec 2023

CLLD AND RURAL IN OP EMPLOYMENT+



**PERSONS WITH
DISABILITIES**

CARERS

**FAMILIES WITH
CHILDREN IN
UNFAVOURABLE
SITUATION**

**LONG TERM OR
REPETEDLY
UNEMPLOYED**

**SENIORS,
MINORITIES,
HOMELESS**

**ADDICTION,
HEALTH RISKS**

- Community (social) work and community centers
- Social work
- Shared and informal care, palliative and home hospice care, homesharing
- Employment programmes
- Support of families and strenghtening of family bonds
- Debts counselling

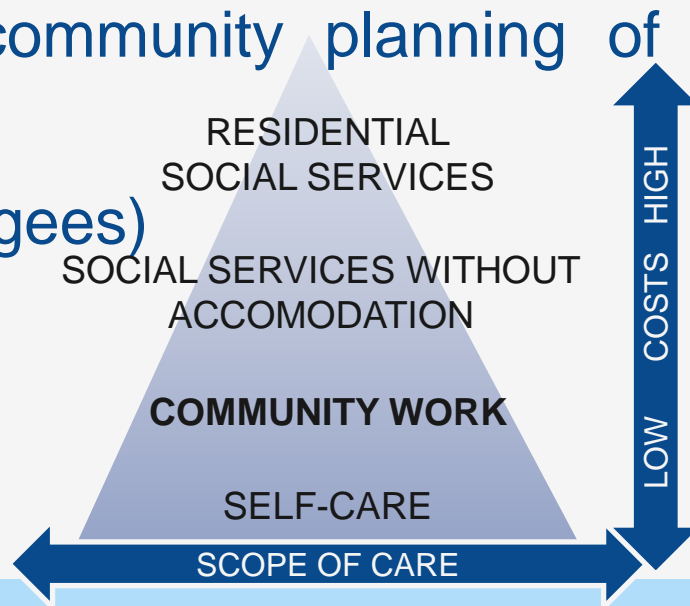


COMMUNITY WORK/CENTRES



The World of Good People: LAG Brdy Vltava

- Multifunctional and synergic (clients from respite services, senior citizens, tutoring and programmes for children, public events for residents, meetings of social services providers, food bank, community wardrobe...)
- Community resources and volunteering
- Active role of LAG in community planning of social services
- Flexibility (pandemic, refugees)



SHARED SOCIAL WORKER FOR SMALL MUNICIPALITIES

- 4 projects within LAG Posázaví
- Coordination of Social Work in microregion CHOPOS: Voluntery Union of Municipalities CHOPOS
- United system of social work in the area, coordination, shared field social worker
- Bottom-up demand from the mayors (but not all of them – change of mindset, educating and spreading the instrument)
- Short-term cases (assistive device), long-term cases (depts, executions, home violence, truancy), screening, promoting the help
- Synergic effects, high flexibility (covid)



CLLD IN OP EMPLOYMENT PLUS

WHAT WE BUILT ON: LAGs - Animation of rural areas

- knowledge of the local needs/resources, strategic planning, trust based on long term cooperation, flexibility, tailoring to the needs, innovatory approach

WHAT IS OUR APPROACH: Where there's a will, there's a way

- ownership of CLLD operations within separate OPs, regular working meetings, capacity building and open dialogue

WHAT WE FOCUS ON NOW AND NEAR FUTURE: Capacity building of LAGs in social inclusion and evaluations

- monitoring and special indicators on target groups' progress, self-evaluation of LAGs – conditional for the following project, thematic seminars, consultations, international conference next year - ?

WHAT WE PLAN TO INNOVATE: Pilot on urban-CLLD

- initial/preparatory phase, kick-off 2024 - ?

CONTACT

Renáta Kučerová,
Head of CLLD and ITI Projects Unit
Ministry of Labour and Social Affairs, Czech Rep.

renata.kucerova@mpsv.cz

tel: +420 950 195 787
+420 602 748 635

www.esfcr.cz