

Energising EU Cohesion

Powering up lagging regions in the renewable energy transition

Sneak Preview

Thomas Schwab

24 October 2023

Motivation

- EU Green Deal: Carbon-neutrality by 2050
- Energy responsible for ~75 % of CO₂ emissions
- Energy transition affects many areas for (regional) economies
 - Energy sector
 - Energy dependence of economy
 - Potential for renewables

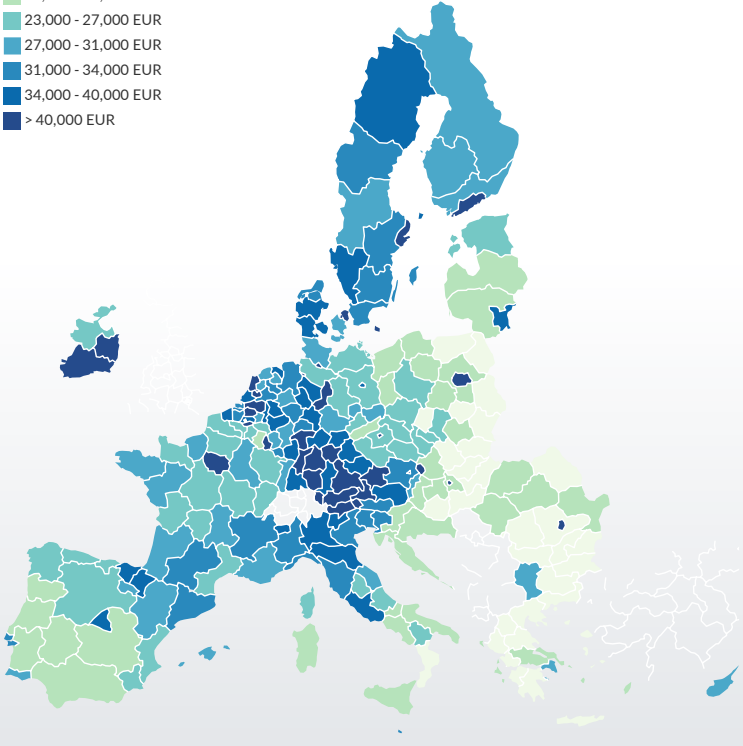
⇒ **What are the overall economic effects?**

⇒ **What's in for different European regions?**

Different regional starting positions

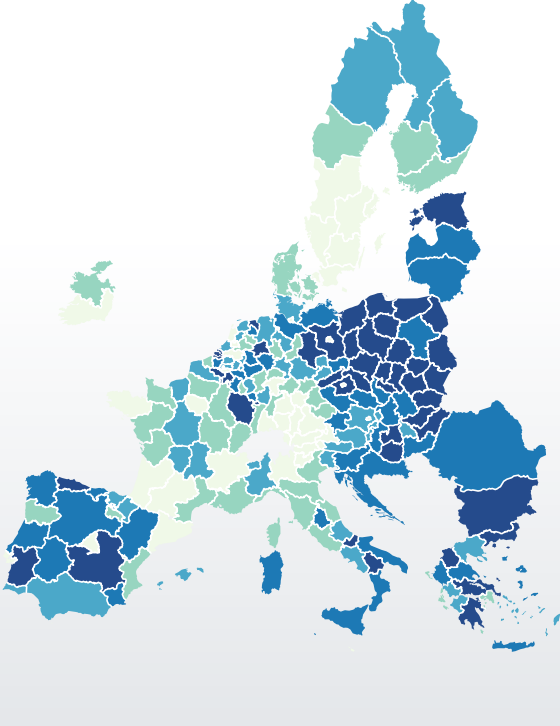
GDP (per capita, 2019)

- < 18,000 EUR
- 18,000 - 23,000 EUR
- 23,000 - 27,000 EUR
- 27,000 - 31,000 EUR
- 31,000 - 34,000 EUR
- 34,000 - 40,000 EUR
- > 40,000 EUR



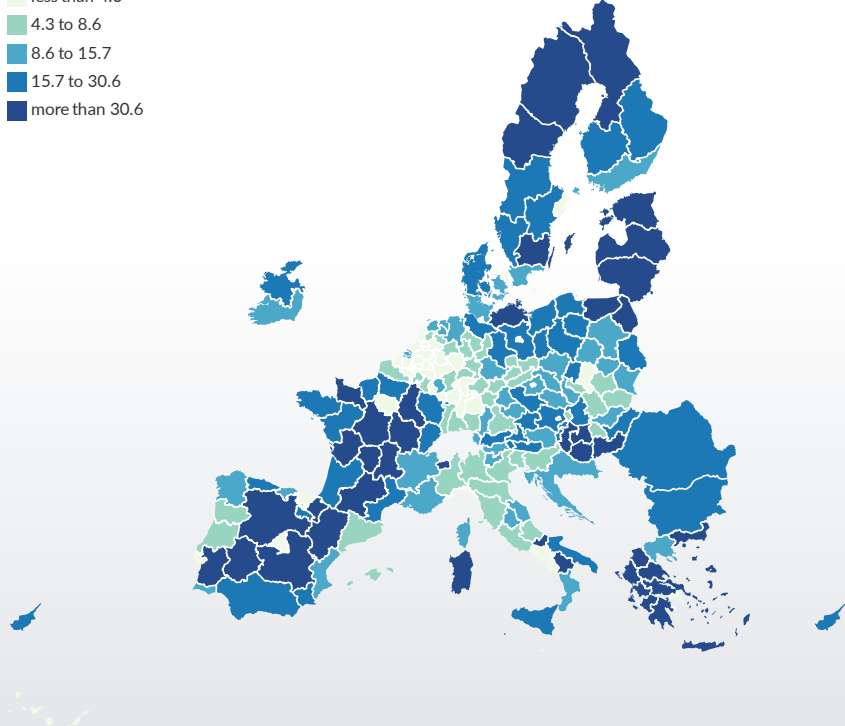
CO2 intensity (2019)

- Tons of CO2 emissions per million Euro
- less than 136.9
 - 136.9 to 189.7
 - 189.7 to 273.8
 - 273.8 to 417.8
 - more than 417.8

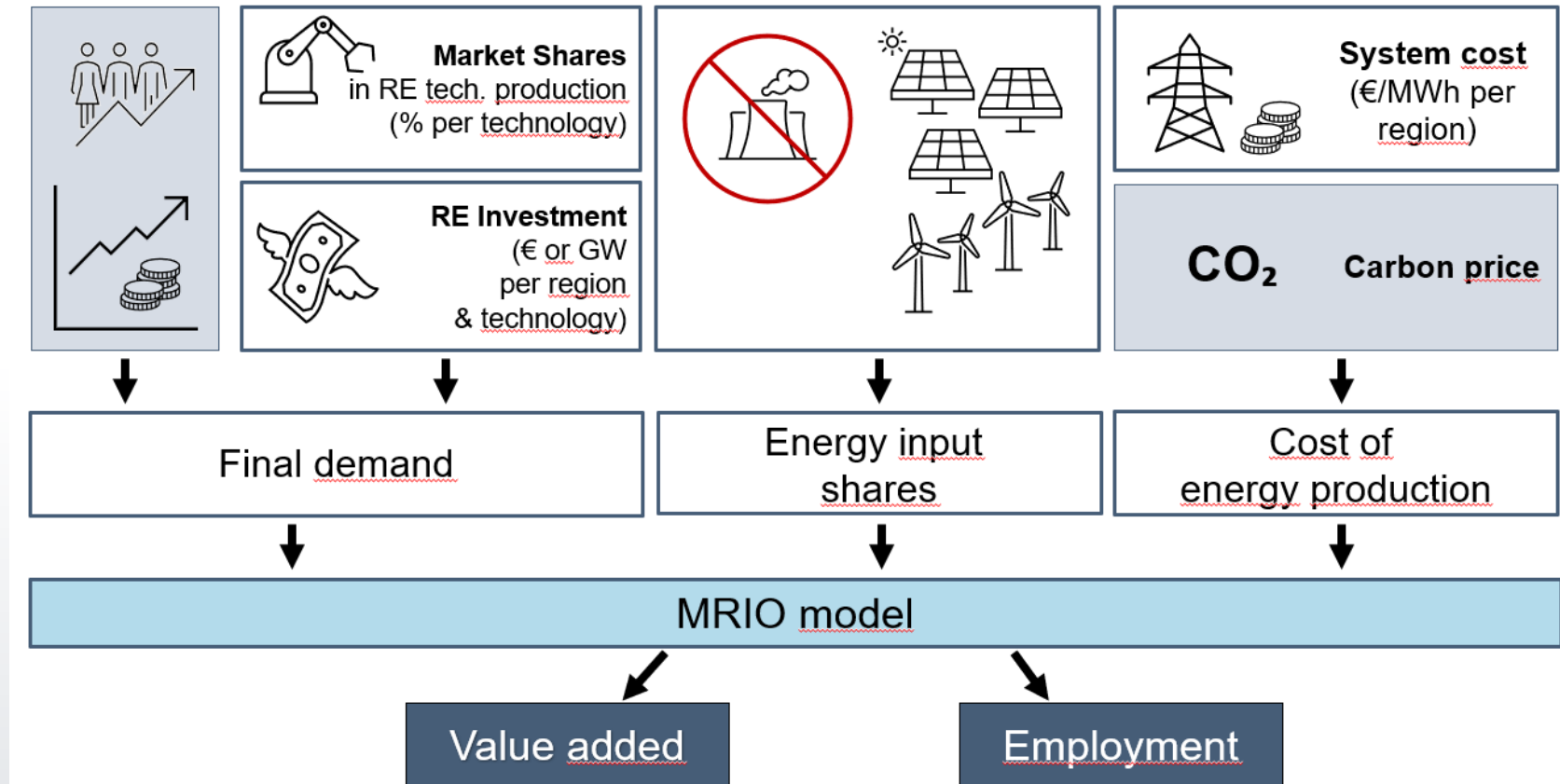


Renewable potential

- Potential wind onshore, PV and hydro, MWh per capita
- less than 4.3
 - 4.3 to 8.6
 - 8.6 to 15.7
 - 15.7 to 30.6
 - more than 30.6



Economic model for value added and employment

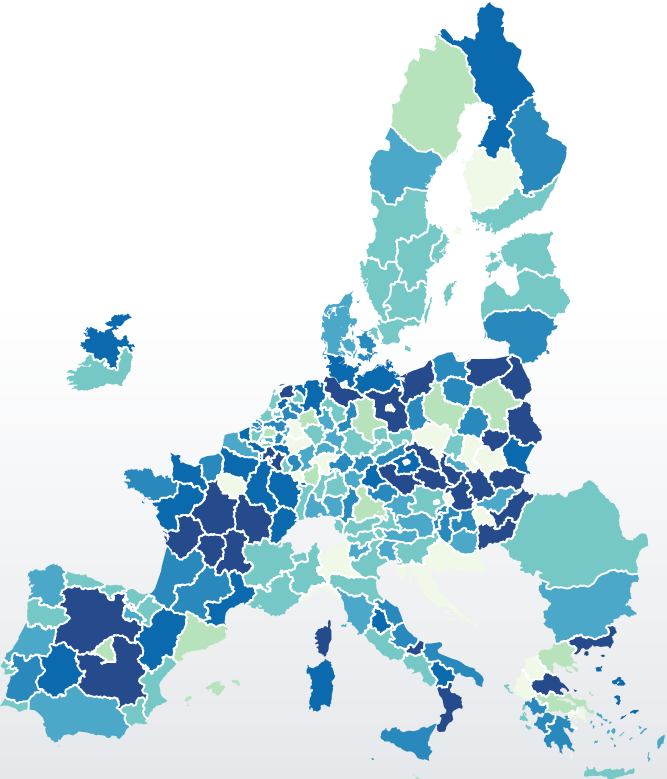


Rural regions more likely to benefit by 2050

Value added

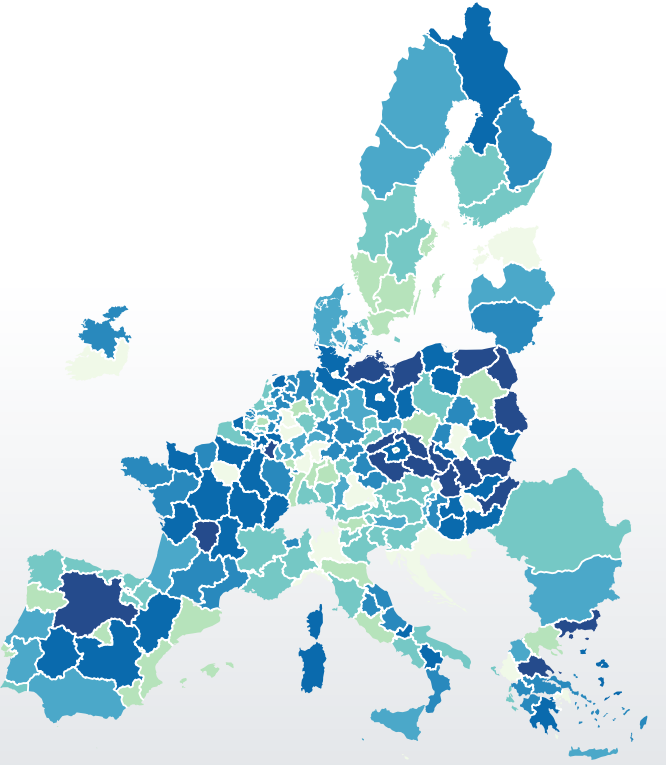
Percentage difference in value added (p.c.)

- less than -0.7
- 0.7 to -0.5
- 0.5 to 0
- 0 to 0.3
- 0.3 to 0.8
- 0.8 to 1.7
- from 1.7



Employment

- less than -0.6
- 0.6 to -0.3
- 0.3 to 0
- 0 to 0.2
- 0.2 to 0.8
- 0.8 to 1.7
- from 1.7



Inspiring People. Shaping the Future.

