



# Support for the production of renewable energy under the Common Agricultural Policy (CAP)

*DG AGRI*

*Unit B.2 – Environmental Sustainability*

# Political context

Clean energy for all  
Europeans  
2016

RED II  
LULUCF  
2018

**Green Deal**  
2019

Fit for 55  
2021

REPowerEU

New  
CAP  
2023

2015

2017

2019

2020

Energy Union Strategy  
[NECPs]

Commission Communication  
"The Future of Food and Farming"

High ILUC-risk  
Regulation

Farm to Fork Strategy  
Biodiversity Strategy

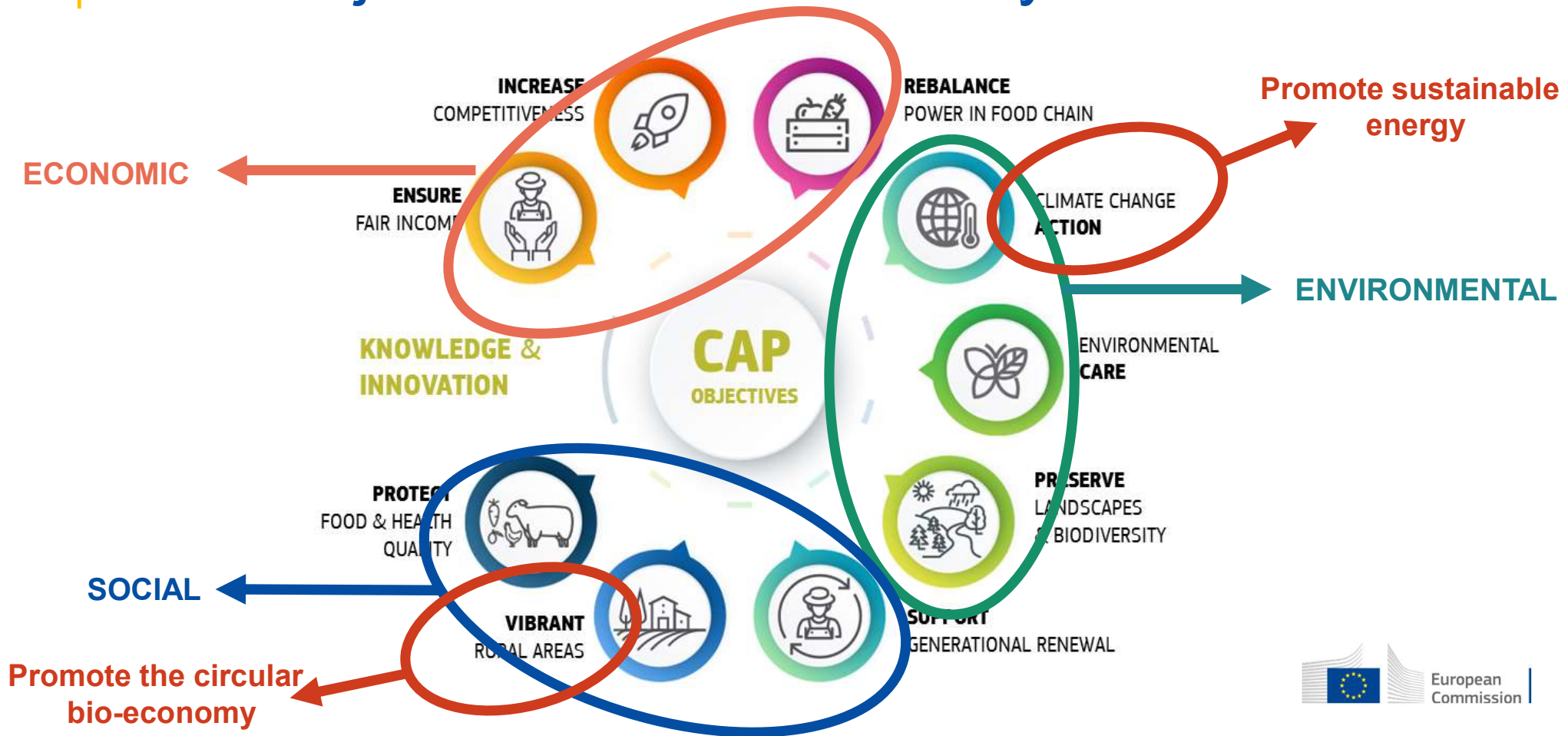
- Climate neutral Europe by 2050
- Need to decarbonise the EU / Reduce GHG emissions
- Transition to clean energy needed



Important role of rural areas and agriculture & forestry

Communication  
Safeguarding  
food security

# CAP Objectives & sustainability dimensions



# Support instruments under the CAP

- **Rural development support (EAFRD):** support in the form of grants (up to 100% support possible) or financial instruments

## Investments

- Investments in the production of renewable energy (on-farm/off-farm) and inter-linked activities
- Investments in improving energy efficiency
- Investments in small-scale infrastructure in rural areas
- Collective investments in e.g. biogas installations

## Rural business start-up

- start-up of rural businesses linked to agriculture or forestry
- business start-up of non-agricultural activities in rural areas related to LEADER strategies

## Cooperation

- Cooperation costs to promote new forms of cooperation between different actors
- LEADER projects based on local development strategies
- European Innovation Partnership (EIP-AGRI)

## Knowledge exchange and dissemination of information

- Support for knowledge transfer
- Support for advisory services

- **Market interventions (EAGF):** e.g. investment support in the Fruit and Vegetable Sector through Operational Programmes

# CAP Strategic Plans – shared management

- **Single CAP plan** for all interventions with a common monitoring system
- **Strategic approach** based on SWOT and needs assessment → involvement of stakeholders and relevant authorities
- **Structured dialogue** with Member States
- **MS drew up** and submitted the CAP Plan
- CAP Plan was **approved by the Commission**
- **Implementation** of the CAP Plans has started in **2023**

INFO

[https://agriculture.ec.europa.eu/cap-my-country/cap-strategic-plans\\_en](https://agriculture.ec.europa.eu/cap-my-country/cap-strategic-plans_en)



# Approved CAP Plans

- **Member States were encouraged** to consider planning interventions in their CAP Strategic Plans which will increase the sustainable generation and use of renewable energy
- **22 CAP-Plans<sup>1</sup>** include **targeted interventions to support the production of renewable energy** in their plans, e.g. on-farm investments for self-consumption but also for diversification and investments for other rural businesses and small infrastructure in rural areas
- Target of all CAP-Plans: production capacity of almost **1.560 MW**

1) AT, BE-FL, BE-WL, BG, CY, EE, FI, FR, EL, HR, HU, IE, IT, LV, LT, NL, PL, PT, RO, SK, SI, ES

# Examples from RD programmes 2014 - 2022

**BE Waasland Region – Promoting renewable energy in cities and the countryside:** Support from the EAFRD was used for an initiative promoting energy efficiency that addresses climate change through targeted actions at grassroots level. [https://eu-cap-network.ec.europa.eu/good-practice/waasland-region-promoting-renewable-energy-cities-and-countryside\\_en](https://eu-cap-network.ec.europa.eu/good-practice/waasland-region-promoting-renewable-energy-cities-and-countryside_en)

**FI A biogas plant investment: From local farming to a new partnership in circular economy:** Investment in a biogas plant allows for formation of a new partnership between local farmers and a food producer contributing to the circular economy. [https://enrd.ec.europa.eu/projects-practice/biogas-plant-investment-local-farming-new-partnership-circular-economy\\_en](https://enrd.ec.europa.eu/projects-practice/biogas-plant-investment-local-farming-new-partnership-circular-economy_en)

**FR Energy transition education and animation:** An educational association focused on environmental education and local development used EAFRD funds from the LEADER measure to organise a series of activities to inform young people about the energy transition and new sustainable practices. [https://eu-cap-network.ec.europa.eu/good-practice/energy-transition-education-and-animation\\_en](https://eu-cap-network.ec.europa.eu/good-practice/energy-transition-education-and-animation_en)

# Thank you



© European Union 2020

Unless otherwise noted the reuse of this presentation is authorised under the [CC BY 4.0](https://creativecommons.org/licenses/by/4.0/) license. For any use or reproduction of elements that are not owned by the EU, permission may need to be sought directly from the respective right holders.

Slide xx: [element concerned](#), source: [e.g. Fotolia.com](#); Slide xx: [element concerned](#), source: [e.g. iStock.com](#)

