



Stronger



Resilient



Prosperous

The model of the community-owned house in Tuse Næs, Denmark



SUMMARY

In Udby, part of Holbæk municipality, the local group 'Turlandet Tuse Næs' built a multi-use community centre on municipal land. The centre serves as a hub offering a water station, meeting room, and nature activity equipment for schools. Strategically located, it also connects various local trails and has improved area signage. The project has been turned into a visual guide called "Initiativ," detailing fundraising and project management steps, and is promoted as a local best practice.



CONTEXT

Stiernes Sti (The Path of Paths) is a project located in the village of Udby, connecting various elements of the rural area of Tuse Næs, a peninsula in the northwestern part of Zealand, the largest island in Denmark. With a population of around 2,300 inhabitants, Tuse Næs is renowned for its scenic coastal areas and small settlements.

The project is part of the broader development plan for Tuse Næs and arose from the community need for improved information about existing services, outdoor activities, and attractions in the region following the COVID-19 pandemic. Turlandet Tuse Næs led this initiative to address this demand, resulting in the 'Path of Paths' project.

OBJECTIVES

The primary objective of the project was to establish a **community-owned facility** in a natural setting that would serve as a focal point for various trails, attracting both the local community and tourists interested in outdoor activities. This new space, named Naturrummet, was designed to be inclusive for individuals with disabilities and equipped with tools for engaging with nature. It functions as a meeting and educational centre for the Tuse Næs community, fostering interactions and strengthening community bonds.

Beyond connecting people, the project aimed to enhance accessibility to existing trails. It achieved this by installing information panels suggesting various activities and points of interest near the community house. Through this effort, the project sought to raise awareness of the services available in the surrounding area and enrich outdoor experiences for both locals and visitors to Tuse Næs, promoting a deeper connection with the natural environment.

Themes: Democracy and participation, building, access to services, LEADER/CLLD, sport, culture and leisure, nature and environment, social economy. **Rural revitalisation**

Country: Denmark

Organisations: Turlandet Tuse Næs – non-profit organisation; The municipality of Holbæk – public authority

Start & end date: 10/2021 - 10/2023

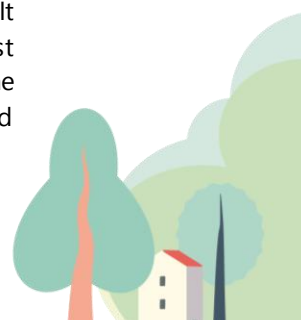
Budget: 402,687 €

Funding sources: LEADER (EAFRD); the municipality of Holbæk; the Nordea Foundation; the national fund "Landdistriktpuljen" by the Danish government; crowdfunding from local citizens

Website: <https://turinaturen.dk/>

Contact: Michella Schack, head of office of Local Action Group of Denmark (LAG Midt-Nordvestsjælland)

ms@lag-midtnordvestsjælland.dk





ACTIVITIES, KEY ACTORS, AND TIMELINE

In response to the community's desire for improved outdoor connections and facilities, a group of citizens came together to explore solutions. This collective effort led to the concept of a community-owned house. Taking the lead in this initiative was the local association, Turlandet Tuse Næs, with support from the Local Action Group (LAG). The LAG contributed approximately 300 hours to the project between 2021 and 2023, assisting with funding access and project management.

After six months of communication with various investors and the municipality, the project successfully secured adequate funding and approvals in March 2022. This allowed starting the construction on both the community-owned house and the connecting path, on a designated site. Construction began in the summer of 2022 and was completed in August 2023. Additionally, Turlandet Tuse Næs acquired educational materials for land and water activities, cooking, and visual arts, sponsored by the Danish Outdoor Council. These materials will enhance teaching at the Naturrummet community house, promoting experiential learning in a natural setting.



RESULTS

The project has achieved two noteworthy tangible outcomes: the connecting path (Stiernes Sti) and the community-owned house (Naturrummet). These accomplishments are the product of a collaborative, grassroots approach, involving individuals of all ages, from children to seniors.

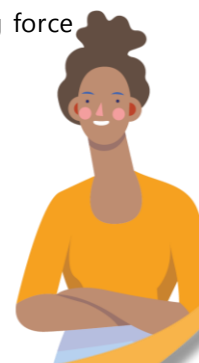
Naturrummet has evolved into a public space for social gatherings and educational endeavours, nurturing a sense of ownership and community accountability. It has the capacity to host up to 30 people and is equipped for a range of activities. The bottom-up approach of this initiative, from conception to implementation, offers a valuable model for citizen-led projects. This approach has been explained in user-friendly educational materials to share this best practice for the benefit of others.



SUCCESS FACTORS/LESSONS LEARNT

The project initially encountered difficulties in navigating bureaucratic processes, as it had a community-focused vision but lacked a clear action plan. Collaboration with the LAG proved essential in overcoming these challenges. Having a designated leader early in the process simplified the task of gaining an overview, organising the workforce, and significantly expediting the project timeline.

The project's simplicity and adaptability are key factors contributing to its success. It can be easily replicated in other locations, tailored to local needs and geography. Key components in this initiative are the captivating natural landscapes of the area, an enthusiastic community, and strong leadership from the project's outset. The commitment of the community to responsible use of nature has been a driving force behind the tangible results achieved.



Join the Rural Pact Community
https://ruralpact.rural-vision.europa.eu/index_en



<https://rural-vision.europa.eu/>



info@rural-pact.eu



Funded by
the European Union